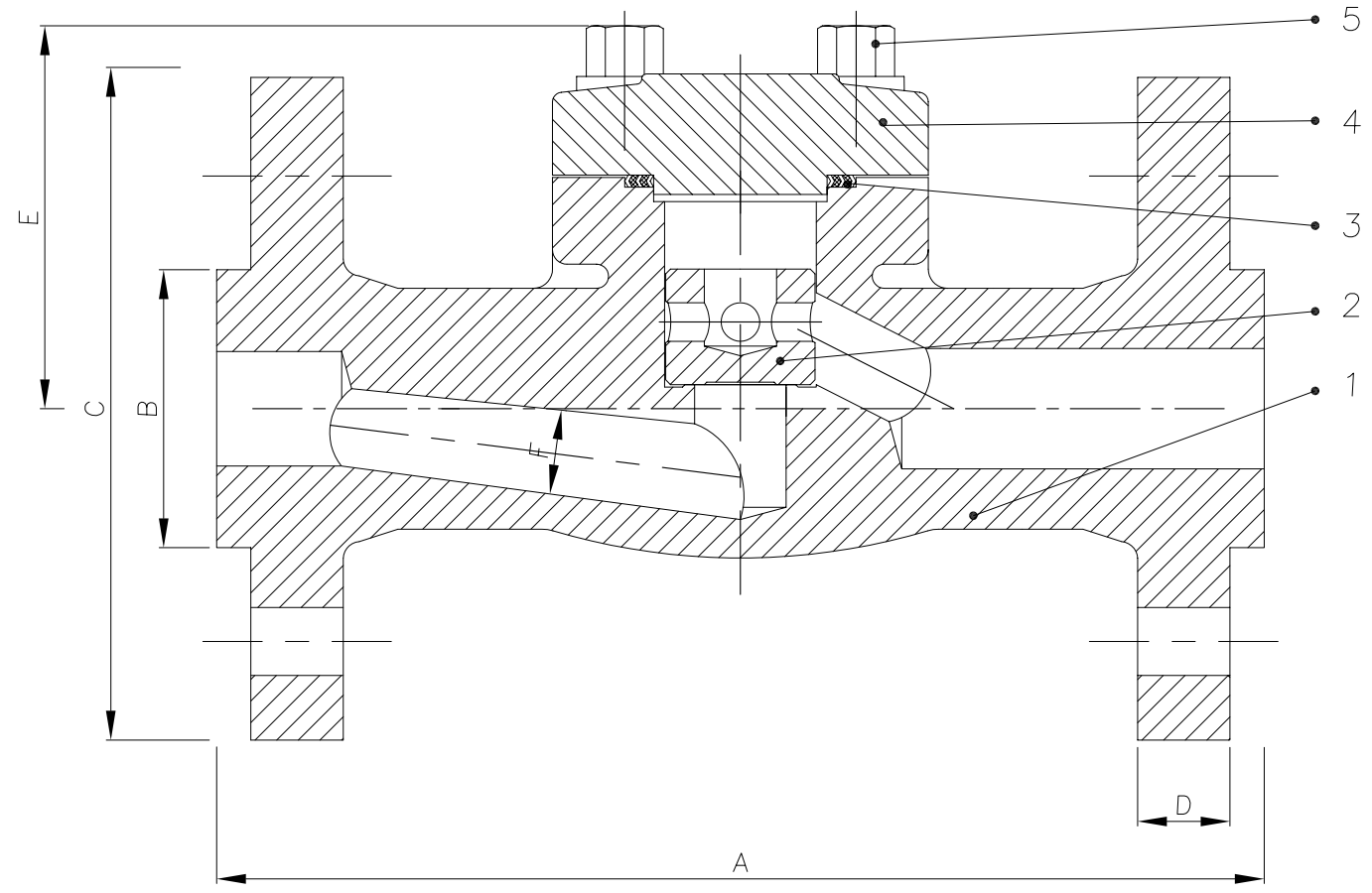


BILL OF MATERIALS			
NO.	Part Name	Materials	Materials
6	Bolt	A193 B8(M)	A193 B7(M)
5	Bonnet	A182 F316(L)	A105
4	Gasket	304SS+Graphite	304SS+Graphite
3	Spring	A276 304	A276 304
2	Disc	A182 F316(L)+STL	A276 420+STL
1	Body+Seat*	A182 F316(L)+STL	A105+STL

*: Seat integral



NB	DN	A	B	C	D	E	F	G	Wgt
1/2"	15	165	35	95	14.3	63	9	-	4.1
3/4"	20	190	43	117	15.9	64	12.5	-	4.7
1"	25	216	51	124	17.5	79	17.5	-	6.3
1 1/4"	32	229	63.5	133	20.6	84	22	-	12
1 1/2"	40	241	73	156	22.2	105	28	-	13
2"	50	292	92	165	25.4	124	33	-	17

Materials available on request: Stainless steel all grades; Duplex & Super Duplex; Chrome-moly; Inconel; Monel;

DRAWING TITLE:
API FORGED, CLASS 600
BOLTED COVER, RF, PISTON CHECK VALVES

CLIENT: .

VENDOR PO REF: .

EVC REF: .



CAD. No. DRAWING NUMBER: 120181 REV 00

AREA No. FACILITY TYPE SEQ. No. SHT. No.

REV	DATE	DESCRIPTION	BY	CHK	APP	SCALE:		
01	10/05/2010	Addition of RTJ flange dims				DRAWN	DM	DATE: 14/12/10
						CHECKED	SMN	DATE
						APPROVED	AW	DATE

DESIGN CODE	API 602/ANSI B16.34	TEST PRESSURES		
FACE TO FACE DIMENSIONS	ANSI B 16.10	BODY	153.15	Barg
ENDS FLANGES DIMENSIONS	ASME B16.5	SEAT	112.31	Barg
TESTING CODE	API 598	BACKSEAT	112.31	Barg
		AIR - SEAT	6.0	Barg

All drawings are subject to copyright, reproduction only with express permission of Edmund Valve Company (1965) Ltd. Subject to updating and revision. All Edmund valves drawings are product specific, it is the clients responsibility to ensure suitability for service. Materials, design and dimensions subject to contract.

MATERIALS TO MAKE MRQ175 LATEST EDITION (WETTED PARTS)