

BILL OF MATERIALS				
NO.	DESIGNATION	QTY	MATERIAL	NOTES
1	BODY	1	ASTM A216 WCB	
2	BONNET	1	ASTM A216 WCB	
3	BONNET BOLT		ASTM A193 B7	
4	BONNET NUT		ASTM A194 2H	
5	GLAND EYE BOLT	2	ASTM A193 B7	
6	GLAND NUT	2	ASTM A194 2H	
7	WASHER	2	CARBON STEEL	
8	PIN	2	CARBON STEEL	
9	HANDWHEEL	1	DUCTILE IRON	
10	H.W.LOCK NUT	1	CARBON STEEL	
11	STEM NUT	1	DUCTILE IRON	
12	RETAINING NUT	1	CARBON STEEL	
13	LUBRICATING CUP	1	COPPER	
14	GLAND FLANGE	1	ASTM A216 WCB	
15	GLAND	1	ASTM A182 F6	
16	PACKING	7	BROLDED GRAPHITE	
17	BACK SEAT	1	ASTM A182 F6	
18	STEM	1	ASTM A182 F6a	
19	GASKET	1	304+GRAPHITE	
20	WEDGE	1	ASTM A216 WCB+13%Cr.	
21	SEAT	2	ASTM A105+STL	

ITEM NO.	N.B	DN	L	D	H(Open)
	2"	51	178	152	397
	3"	76	203	191	471
	4"	102	229	229	565
	6"	152	267	279	792
	8"	203	292	343	970
	10"	254	330	406	1198
	12"	305	356	483	1420
	14"	337	381	533	1562
	16"	387	406	597	1746
	18"	438	432	635	1861
	20"	489	457	699	2108
	24"	591	509	813	2464

DESIGN CODE	API 600/ANSI B16.34	TEST PRESSURES		
FACE TO FACE DIMENSIONS	ASME B16.10	BODY	30.0	Barg
ENDS FLANGES DIMENSIONS	ASME B16.5	SEAT	22.0	Barg
TESTING CODE	API 598	BACKSEAT	22.0	Barg
		AIR - SEAT	6.0	Barg

REV	DATE	DESCRIPTION	BY	CHK	APP	SCALE:		
						DRAWN	DM	DATE
						CHECKED	SMN	DATE
						APPROVED	AW	DATE

DRAWING TITLE:
API CAST STEEL CLASS 150
BOLTED BONNET, RF, GATE VALVES

CLIENT: .

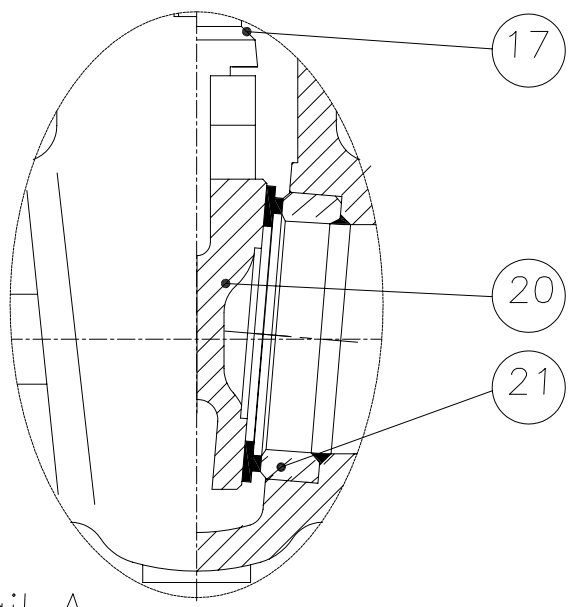
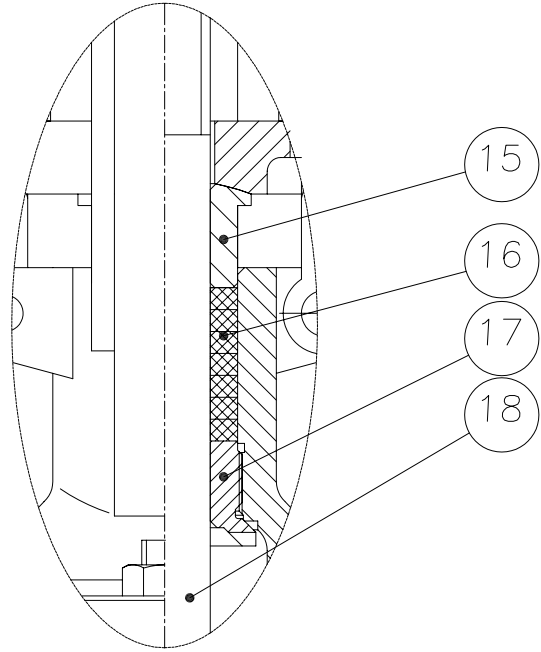
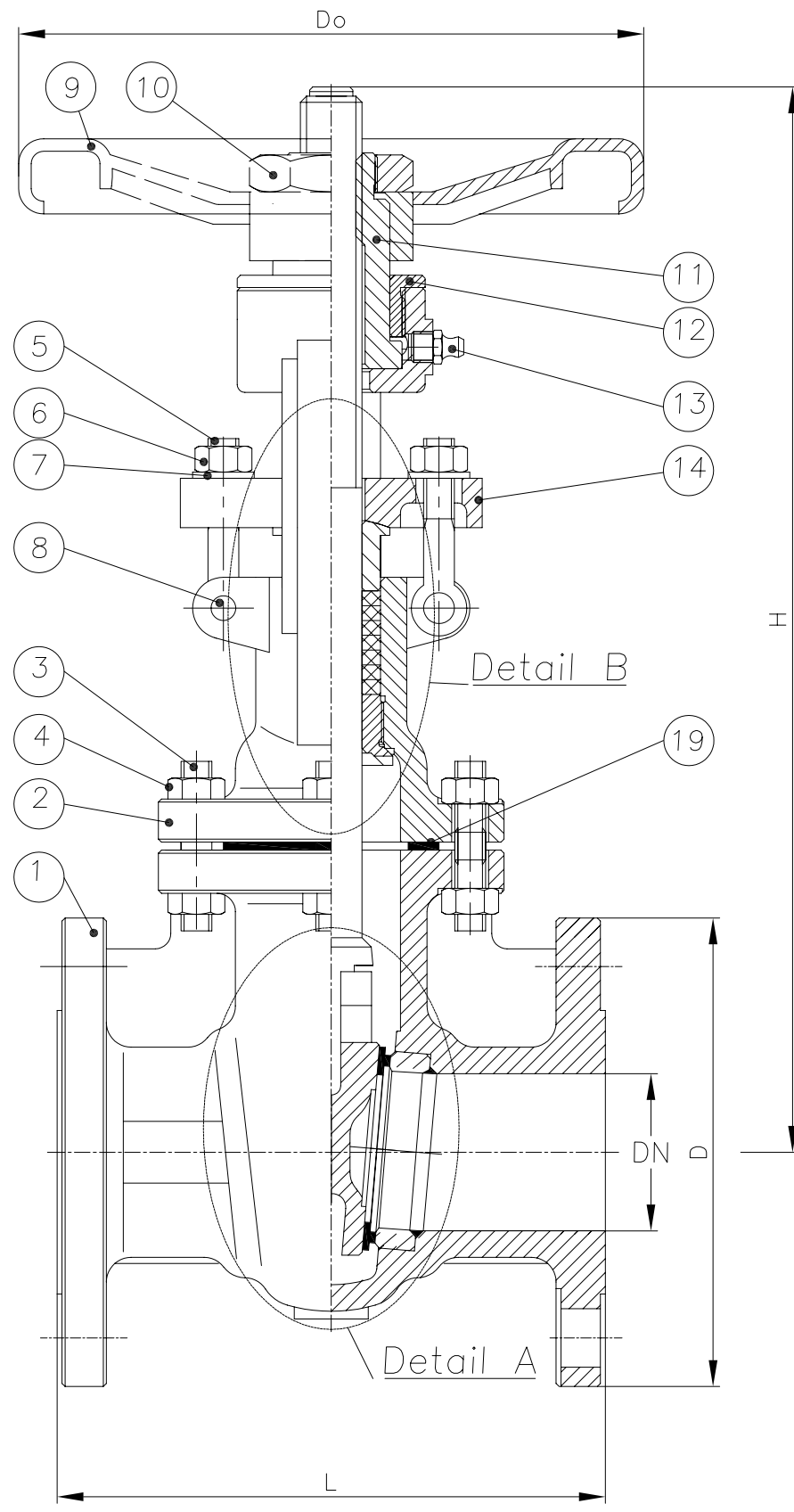
VENDOR PO REF: .

EVC REF: .

CAD. No. DRAWING NUMBER: 120057 REV

AREA No. 1 FACILITY TYPE SEQ. No. SHT. No.

All drawings are subject to copyright, reproduction only with express permission of Edmund Valve Company (1965) Ltd. Subject to updating and revision. MATERIALS TO NACE MR0175 LATEST EDITION (WETTED PARTS).



BILL OF MATERIALS				
NO.	DESIGNATION	QTY	MATERIAL	NOTES
1	BODY	1	ASTM A216 WCB	
2	BONNET	1	ASTM A216 WCB	
3	BONNET BOLT		ASTM A193 B7	
4	BONNET NUT		ASTM A194 2H	
5	GLAND EYE BOLT	2	ASTM A193 B7	
6	GLAND NUT	2	ASTM A194 2H	
7	WASHER	2	CARBON STEEL	
8	PIN	2	CARBON STEEL	
9	HANDWHEEL	1	DUCTILE IRON	
10	H.W.LOCK NUT	1	CARBON STEEL	
11	STEM NUT	1	DUCTILE IRON	
12	RETAINING NUT	1	CARBON STEEL	
13	LUBRICATING CUP	1	COPPER	
14	GLAND FLANGE	1	ASTM A216 WCB	
15	GLAND	1	ASTM A182 F6	
16	PACKING	7	BROLDED GRAPHITE	
17	BACK SEAT	1	ASTM A182 F6	
18	STEM	1	ASTM A182 F6a	
19	GASKET	1	304+GRAPHITE	
20	WEDGE	1	ASTM A216 WCB+13%Cr.	
21	SEAT	2	ASTM A105+STL	

ITEM NO.	N.B	DN	L	D	H(Open)
	2"	51	216	165	397
	3"	76	283	210	514
	4"	102	305	254	607
	6"	152	403	318	821
	8"	203	419	381	1040
	10"	254	457	445	1249
	12"	305	502	521	1499
	14"	337	762	584	1559
	16"	387	838	648	1746
	18"	438	914	711	1978
	20"	489	991	775	2197
	24"	591	1143	914	2572

DESIGN CODE	API 600/ANSI B16.34	TEST PRESSURES		
FACE TO FACE DIMENSIONS	ASME B16.10	BODY	76.65	Barg
ENDS FLANGES DIMENSIONS	ASME B16.5	SEAT	56.21	Barg
TESTING CODE	API 598	BACKSEAT	56.21	Barg
		AIR - SEAT	6.0	Barg

REV	DATE	DESCRIPTION	BY	CHK	APP	SCALE:		
						DRAWN	DM	DATE
						CHECKED	SMN	DATE
						APPROVED	AW	DATE

DRAWING TITLE:
API CAST STEEL CLASS 300
BOLTED BONNET, RF, GATE VALVES

CLIENT: .

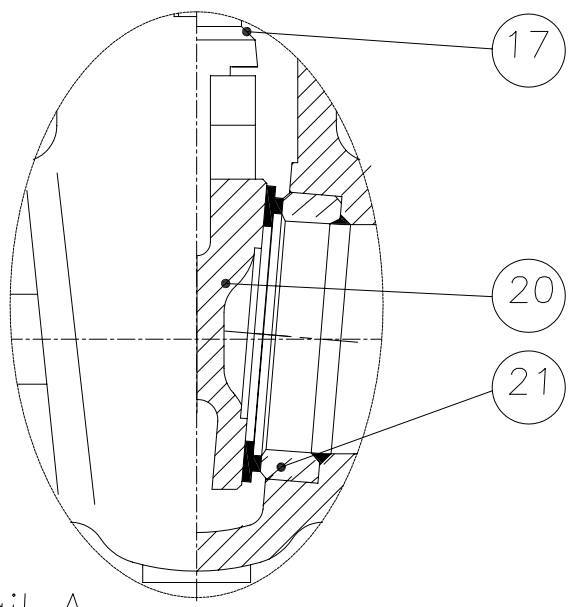
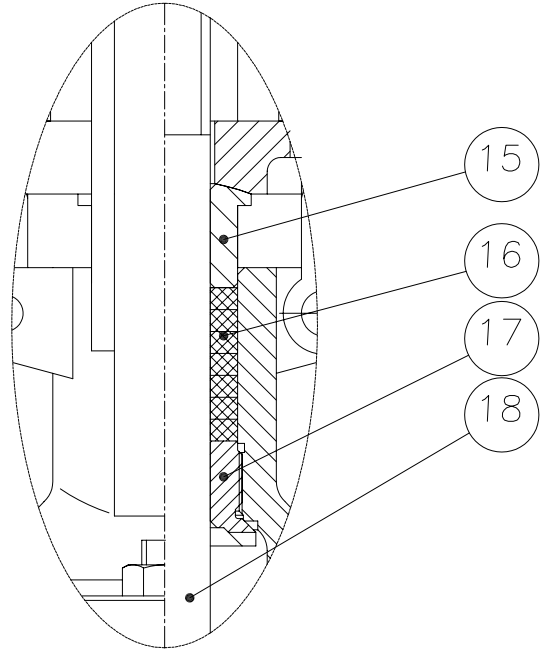
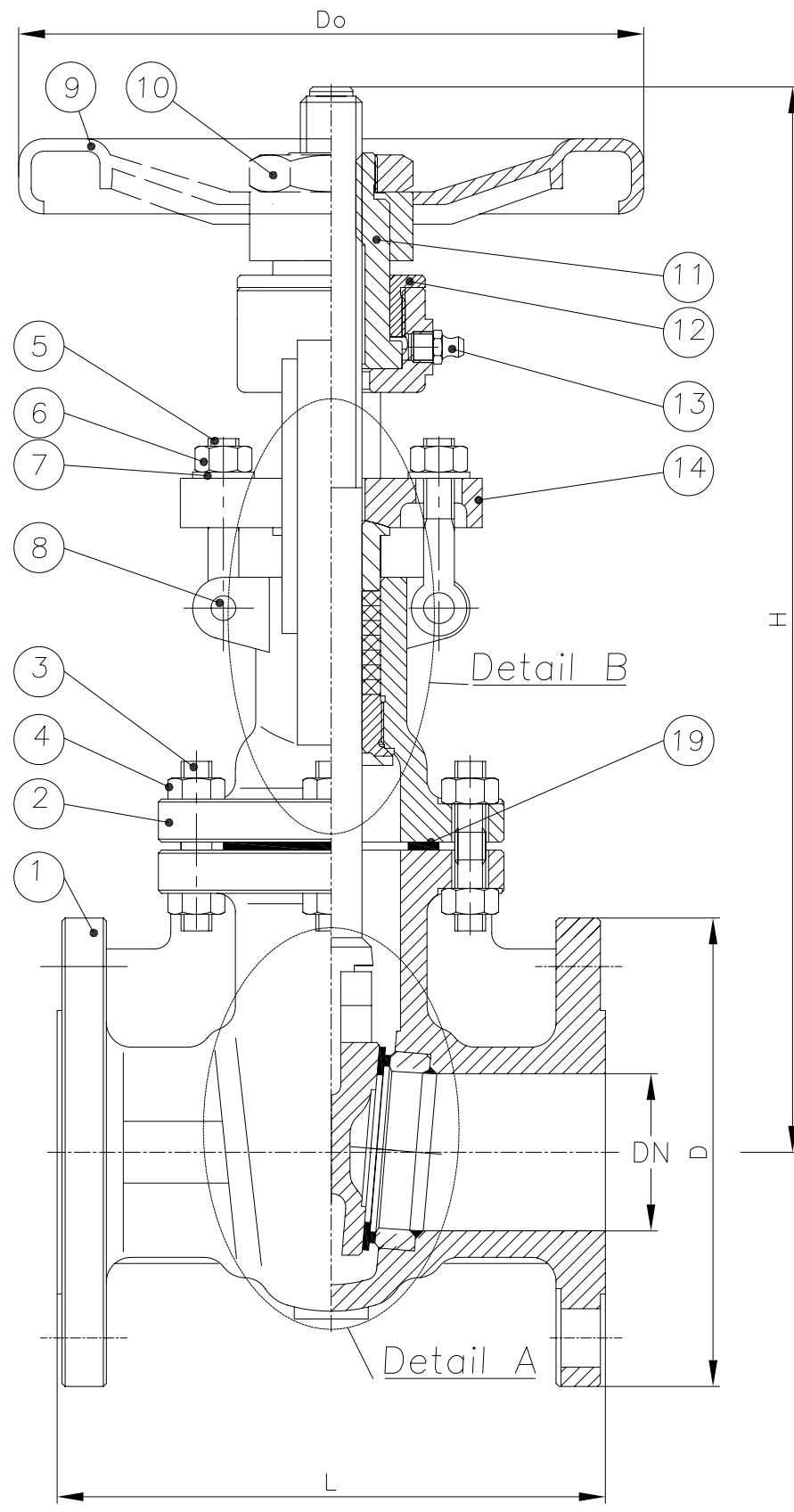
VENDOR PO REF: .

EVC REF: .

CAD. No. | DRAWING NUMBER: 120061 | REV

AREA No. | FACILITY | TYPE | SEQ. No. | SHT. No.

All drawings are subject to copyright, reproduction only with express permission of Edmund Valve Company (1965) Ltd. Subject to updating and revision. MATERIALS TO NACE MR0175 LATEST EDITION (WETTED PARTS).



BILL OF MATERIALS				
NO.	DESIGNATION	QTY	MATERIAL	NOTES
1	BODY	1	ASTM A216 WCB	
2	BONNET	1	ASTM A216 WCB	
3	BONNET BOLT		ASTM A193 B7	
4	BONNET NUT		ASTM A194 2H	
5	GLAND EYE BOLT	2	ASTM A193 B7	
6	GLAND NUT	2	ASTM A194 2H	
7	WASHER	2	CARBON STEEL	
8	PIN	2	CARBON STEEL	
9	HANDWHEEL	1	DUCTILE IRON	
10	H.W.LOCK NUT	1	CARBON STEEL	
11	STEM NUT	1	DUCTILE IRON	
12	RETAINING NUT	1	CARBON STEEL	
13	LUBRICATING CUP	1	COPPER	
14	GLAND FLANGE	1	ASTM A216 WCB	
15	GLAND	1	ASTM A182 F6	
16	PACKING	7	BROLDED GRAPHITE	
17	BACK SEAT	1	ASTM A182 F6	
18	STEM	1	ASTM A182 F6a	
19	GASKET	1	304+GRAPHITE	
20	WEDGE	1	ASTM A216 WCB+13%Cr.	
21	SEAT	2	ASTM A105+STL	

ITEM NO.	N.B	DN	L	D	H(Open)
	2"	51	292	165	398
	3"	76	356	210	549
	4"	102	432	273	654
	6"	152	559	356	922
	8"	200	660	419	1110
	10"	248	787	508	1246
	12"	298	838	559	1553
	14"	327	889	603	1842
	16"	375	991	686	2089
	18"	419	1092	743	2211
	20"	464	1194	813	2616
	24"	559	1397	940	2921

DESIGN CODE	API 600/ANSI B16.34	TEST PRESSURES		
FACE TO FACE DIMENSIONS	ASME B16.10	BODY	153.15	Barg
ENDS FLANGES DIMENSIONS	ASME B16.5	SEAT	112.31	Barg
TESTING CODE	API 598	BACKSEAT	112.31	Barg
		AIR - SEAT	6.0	Barg

REV	DATE	DESCRIPTION	BY	CHK	APP	SCALE:		
						DRAWN	DM	DATE
						CHECKED	SMN	DATE
						APPROVED	AW	DATE

DRAWING TITLE:
API CAST STEEL CLASS 600
BOLTED BONNET, RF, GATE VALVES

CLIENT: .

VENDOR PO REF: .

EVC REF: .

CAD. No. | DRAWING NUMBER: 120064 | REV

AREA No. | FACILITY | TYPE | SEQ. No. | SHT. No.

All drawings are subject to copyright, reproduction only with express permission of Edmund Valve Company (1965) Ltd. Subject to updating and revision. MATERIALS TO NACE MR0175 LATEST EDITION (WETTED PARTS).

1 | 2 | 3 | 4 | 5 | 6 | 7 | 8

A

B

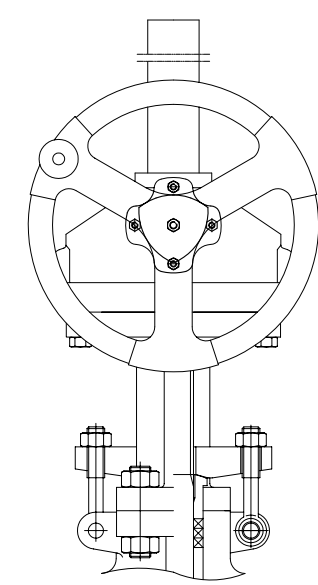
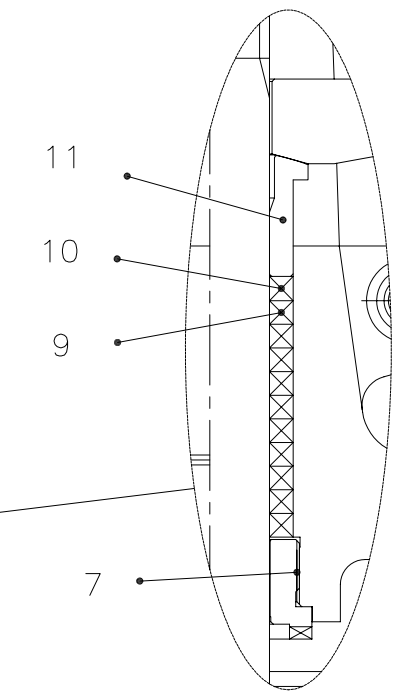
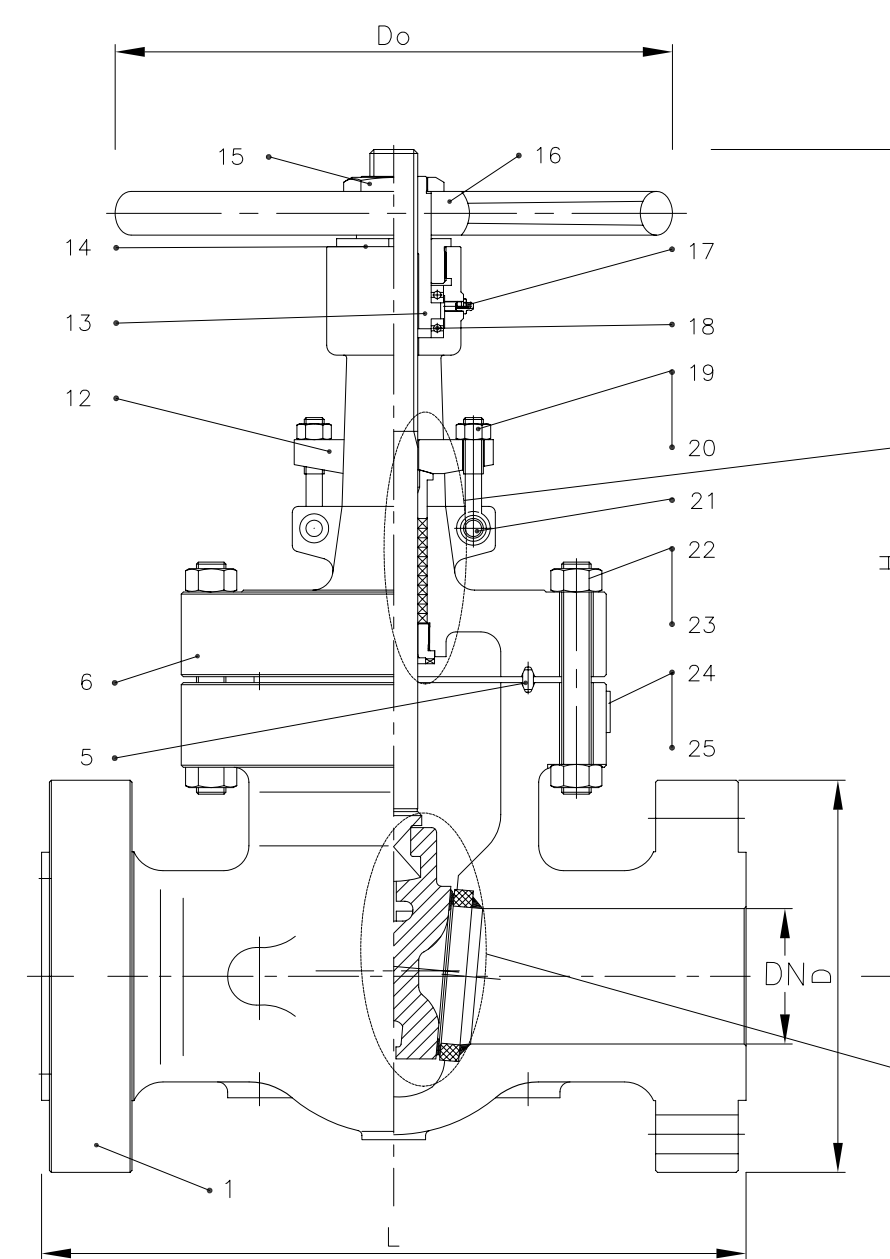
C

D

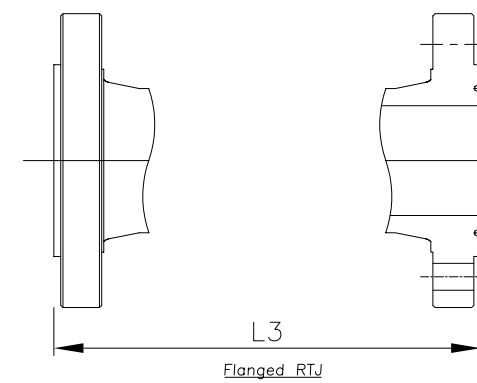
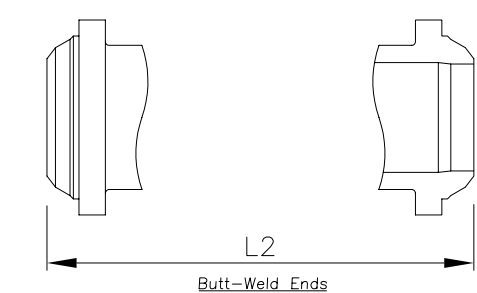
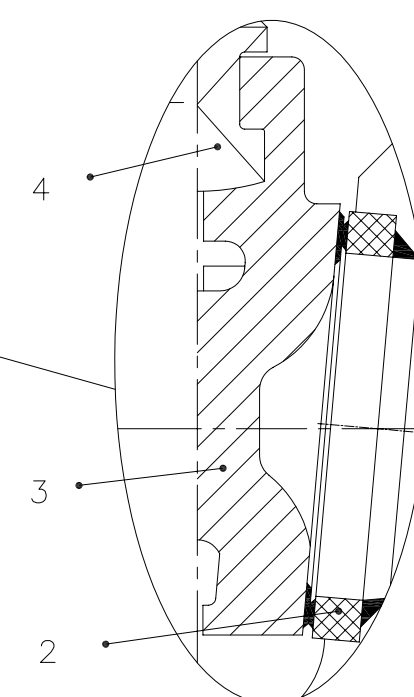
E

BILL OF MATERIALS				
NO.	DESIGNATION	QTY	MATERIAL	NOTES
1	Body	1	A216 WCB	
2	Seat Ring	2	A105+STL 6	
3	Wedge	1	A216 WCB+STL 6	
4	Stem	1	A182 F6a	
5	Gasket	1	A2760410	
6	Bonnet	1	A216 WCB	
7	Back Seat	1	A276 410	
8	-			
9	Packing	2	Braided Graphite	
10	Packing	4~5	Flexible Graphite	
11	Gland	1	A276 410	
12	Gland Flange	1	A216 WCB	
13	Stem Nut	1	A439 D-2	
14	Gland Nut	1	ANSI 1020	
15	Lock Nut	1	ANSI 1020	
16	Handwheel	1	A536 60-40-18	
17	Grease Nipple	1	Carbon Steel	
18	Bearing	2	UNS 52100	
19	Eye Bolt		A193 B7	
20	Eye Nut		A194 2H	
21	Pin	2	A108 1035	
22	Bolt		A193 B7	
23	Nut		A194 2H	
24	Rivet	2	304SS	
25	Name Plate	1	304SS	

Materials available on request: Stainless steel all grades; Duplex & Super Duplex; Chrome-moly; Inconel; Monel;



GEAR OP 8" & ABOVE AND UPON REQUEST



N.B	DN	L	L2	L3	D	Do	H(Open)	Wgt*
2"	43	368	368	371	216	300	539	74
3"	66	381	470	384	241	355	672	149
4"	92	457	546	460	292	400	782	157
6"	139	610	705	613	381	560	1076	408
8"	182	737	832	740	470	450	1411	702
10"	230	838	991	841	546	560	1720	1123
12"	273	965	1131	968	610	560	1965	1388
14"	300	1029	1257	1038	641	610	1902	1998
16"	344	1130	1383	1140	705	610	2051	2700

NOTE: BW Schedule to suit client order
* Wgt for RF valves only

DESIGN CODE	API 600/ANSI B16.34	TEST PRESSURES		
FACE TO FACE DIMENSIONS	ASME B16.10	BODY	153.15	Barg
ENDS FLANGES DIMENSIONS	ASME B16.5/B16.25	SEAT	112.31	Barg
TESTING CODE	API 598	BACKSEAT	112.31	Barg
		AIR - SEAT	6.0	Barg

REV	DATE	DESCRIPTION	BY	CHK	APP	SCALE:		
01	10/05/2010	Addition of RTJ flange dims				DRAWN	DM	DATE
						CHECKED	SMN	DATE
						APPROVED	AW	DATE

DRAWING TITLE:
API CAST CARBON STEEL CLASS 900
BOLTED BONNET, RF/RTJ/BWE, GATE VALVES

CLIENT: .

VENDOR PO REF: .

EVC REF: .

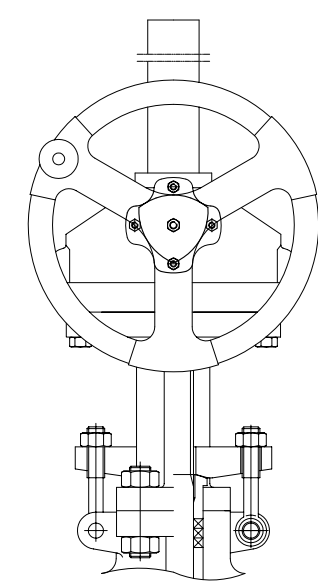
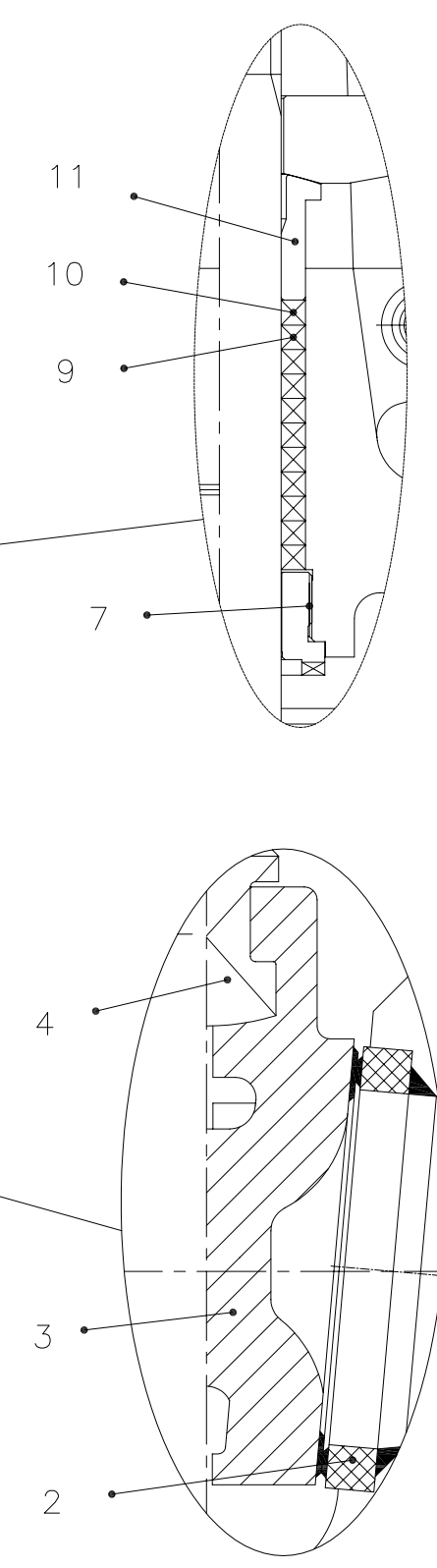
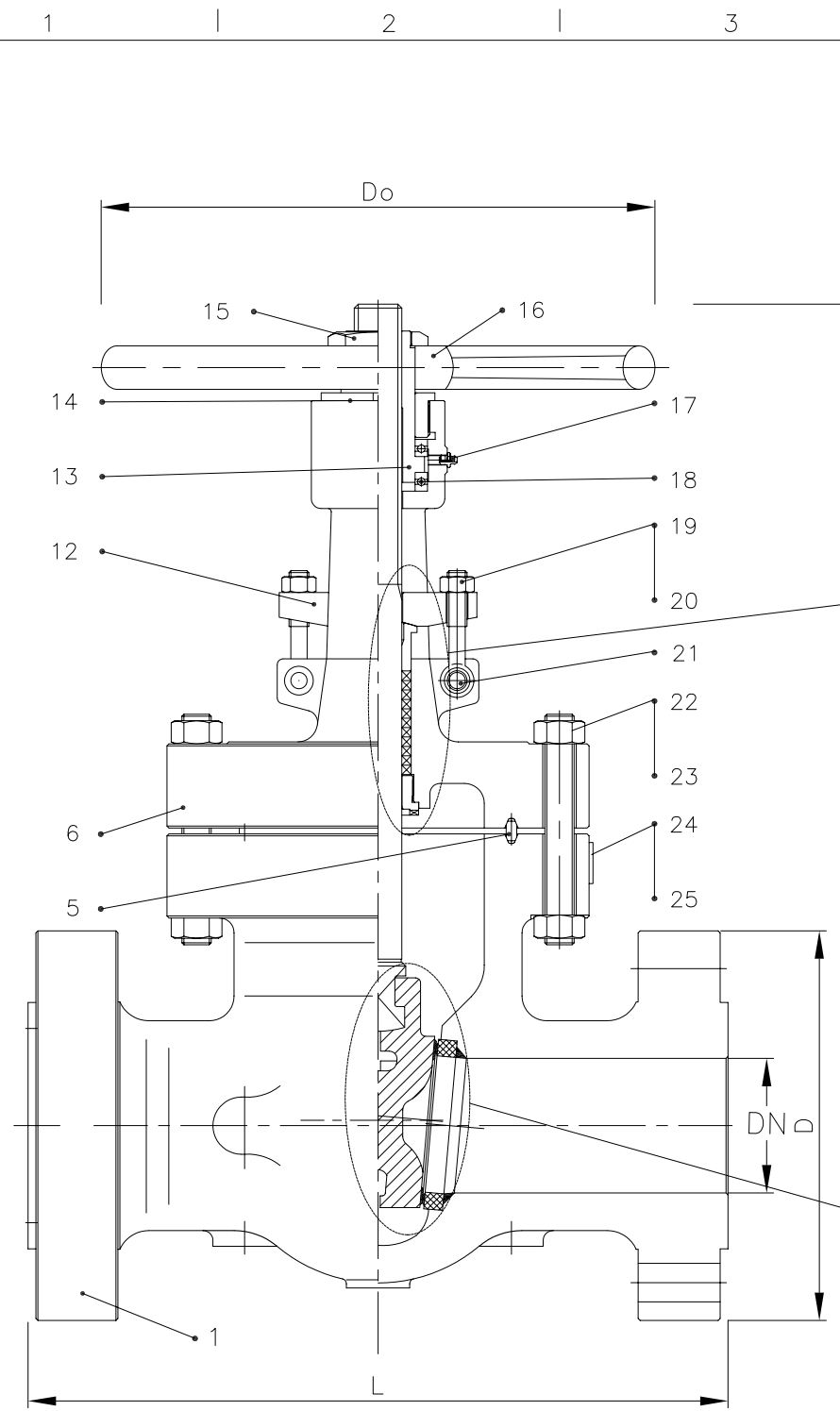
CAD. No. DRAWING NUMBER: 120171 REV 00

AREA No. | FACILITY | TYPE | SEQ. No. | SHT. No.

All drawings are subject to copyright, reproduction only with express permission of Edmund Valve Company (1965) Ltd. Subject to updating and revisions all Edmund valve drawings are product specific, it is the clients responsibility to ensure suitability for service. Materials, design and dimensions subject to contract.

1 | 2 | 3 | 4 | 5 | 6 | 7 | 8

MATERIALS TO NACE MR0175 LATEST EDITION (WETTED PARTS).



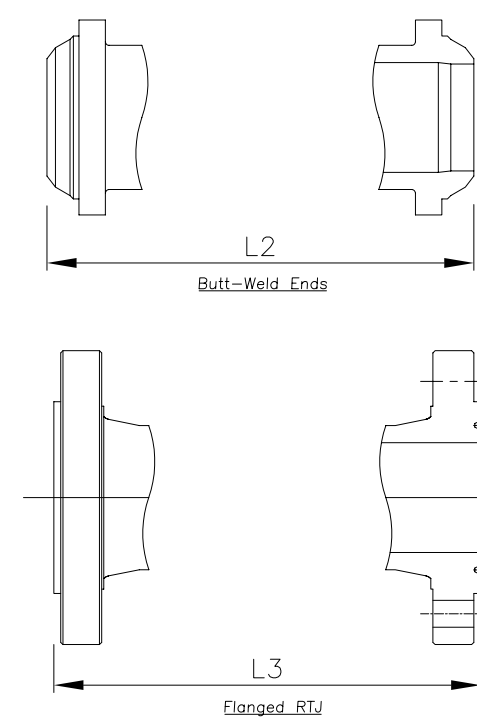
GEAR OP 8" & ABOVE AND UPON REQUEST

BILL OF MATERIALS				
NO.	DESIGNATION	QTY	MATERIAL	NOTES
1	Body	1	A216 WCB	
2	Seat Ring	2	A105+STL 6	
3	Wedge	1	A216 WCB+STL 6	
4	Stem	1	A182 F6a	
5	Gasket	1	A276 410	
6	Bonnet	1	A216 WCB	
7	Back Seat	1	A276 410	
8	*			
9	Packing	2	Braided Graphite	
10	Packing	4~5	Flexible Graphite	
11	Gland	1	A276 410	
12	Gland Flange	1	A216 WCB	
13	Stem Nut	1	A439 D-2	
14	Gland Nut	1	ANSI 1020	
15	Lock Nut	1	ANSI 1020	
16	Handwheel	1	A536 60-40-18	
17	Grease Nipple	1	Carbon Steel	
18	Bearing	2	UNS 52100	
19	Eye Bolt		A193 B7	
20	Eye Nut		A194 2H	
21	Pin	2	A108 1035	
22	Bolt		A193 B7	
23	Nut		A194 2H	
24	Rivet	2	304SS	
25	Name Plate	1	304SS	

Materials available on request: Stainless steel all grades; Duplex & Super Duplex; Chrome-moly; Inconel; Monel;

N.B	DN	L	L2	L3	D	Do	H(Open)	Wgt*
2"	43	368	368	371	216	300	539	74
3"	66	470	470	473	266	400	738	164
4"	92	546	546	549	311	500	783	234
6"	139	705	705	711	393	560	1196	555
8"	182	832	832	841	482	560	1546	1296
10"	230	991	991	1000	584	710	1688	1801
12"	273	1131	1131	1146	673	710	2090	3434
14"	300	1257	1257	1276	749	760	2163	3704
16"	344	1383	1383	1407	825	760	2486	6255

NOTE: BW Schedule to suit client order
* Wgt for RF valves only



DESIGN CODE	API 600/ANSI B16.34	TEST PRESSURES		
FACE TO FACE DIMENSIONS	ASME B16.10	BODY	153.15	Barg
ENDS FLANGES DIMENSIONS	ASME B16.5/B16.25	SEAT	112.31	Barg
TESTING CODE	API 598	BACKSEAT	112.31	Barg
		AIR - SEAT	6.0	Barg

REV	DATE	DESCRIPTION	BY	CHK	APP	SCALE:		
01	10/05/2010	Addition of RTJ flange dims				DRAWN	DM	DATE
						CHECKED	SMN	DATE
						APPROVED	AW	DATE

DRAWING TITLE:
API CAST CARBON STEEL CLASS 1500
BOLTED BONNET, RF/RTJ/BWE, GATE VALVES

CLIENT: .

VENDOR PO REF: .

EVC REF: .

CAD. No. DRAWING NUMBER: 120064-02 REV 00

AREA No. | FACILITY | TYPE | SEQ. No. | SHT. No.

All drawings are subject to copyright, reproduction only with express permission of Edmund Valve Company, (1965) Ltd. Subject to updating and revisions all Edmund valve drawings are product specific, it is the clients responsibility to ensure suitability for service. Materials, design and dimensions subject to contract.

MATERIALS TO NACE MR0175 LATEST EDITION (WETTED PARTS).