

8	BOLTING	ASTM A193 B7/M A194 Gr.2H/M ASTM A193 L7/M A194 Gr.7/M	ASTM A193 B8/M A194 Gr.8/M
7	GASKET	SS304+GRAPHITE	
6	LOWER THRUST WASHER	PTFE	
5	STEM	ASTM A182 F316 (L)	
4	STEM SEAL	PTFE	
3	BALL	ASTM A351 CF8M	
2	SEAT RING	RPTFE	
1	BODY/CLOSURE	ASTM A216 WCB/WCC ASTM A352 LCB/LCC	ASTM A351 CF8M
NO	PART NAME	MATERIAL	NOTES

NOTES	
1	
2	
3	

Size	A	B	B1	C
1/2"	108	12	12	89
3/4"	117	20	20	98
1"	127	25	25	108
1 1/2"	165	38	38	127
2"	178	51	51	152
2 1/2"	191	58	58	178
3"	203	77	77	190
4"	229	102	102	228
6"	394	152	152	280
8"	457	203	203	343
10"	533	254	254	406

All drawings are subject to copyright, reproduction only with express permission of Edmund Valve Company (1965) Ltd. Subject to updating and revision. All Edmund valves drawings are product specific. It is the clients responsibility to ensure suitability for service. Materials, design and dimensions subject to contract.

DESIGN CODE	API 6D/ANSI B16.34	TEST PRESSURES		
FACE TO FACE DIMENSIONS	ASME B16.10	BODY	30.0	Barg
ENDS FLANGES DIMENSIONS	ASME B16.5	SEAT	22.0	Barg
TESTING CODE	API 598	SEAT - AIR	6.0	Barg

REV	DATE	DESCRIPTION	BY	CHK	APP

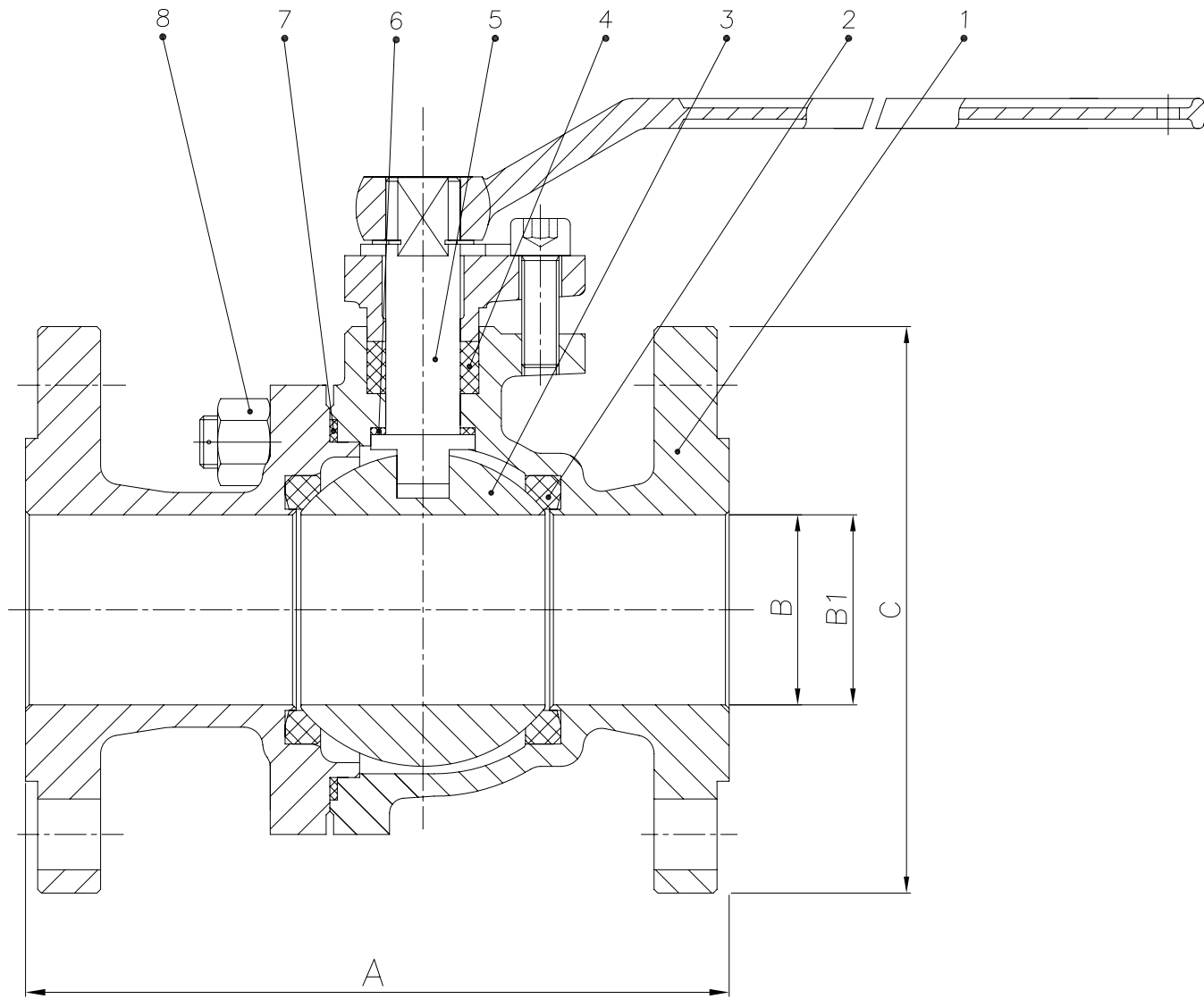
SCALE:		
DRAWN	DM	DATE: 16/02/12
CHECKED	SMN	DATE
APPROVED	AW	DATE

DRAWING TITLE:
 API 6D, CARBON/STAINLESS STEEL CLASS 150
 FLOATING BALL, RF, FB, BALL VALVE

CLIENT:
 VENDOR PO REF:
 EVC REF:

CAD. No. DRAWING NUMBER: 120012 REV 00
 TYPICAL ONLY
 AREA No. | FACILITY | TYPE | SEQ. No. | SHT. No.

MATERIALS TO NACE MR0175 LATEST EDITION (WETTED PARTS).



8	BOLTING	ASTM A193 B7/M A194 Gr.2HM/ ASTM A193 L7/M A194 Gr.7/M	ASTM A193 B8M/ A194 Gr.8M
7	GASKET	SS304+GRAPHITE	
6	LOWER THRUST WASHER	PTFE	
5	STEM	ASTM A182 F316	
4	STEM SEAL	PTFE	
3	BALL	ASTM A351 CF8M	
2	SEAT RING	RPTFE	
1	BODY/CLOSURE	ASTM A216 WCB/WCC ASTM A352 LCB/LCC	ASTM A351 CF8M
NO	PART NAME	MATERIAL	NOTES

NOTES
1
2
3

Size	A	B	B1	C
1/2"	140	12	12	95
3/4"	152	20	20	118
1"	165	25	25	124
1 1/2"	190	38	38	156
2"	216	51	51	165
3"	283	77	77	210
4"	305	102	102	254
6"	403	152	152	318
8"	502	203	203	381
10"	568	254	254	445

All drawings are subject to copyright, reproduction only with express permission of Edmund Valve Company (1965) Ltd. Subject to updating and revision. All Edmund valves drawings are product specific. It is the clients responsibility to ensure suitability for service. Materials, design and dimensions subject to contract.

MATERIALS TO NACE MR0175 LATEST EDITION (WETTED PARTS).

DESIGN CODE	API 6D/ANSI B16.34	TEST PRESSURES		
FACE TO FACE DIMENSIONS	ASME B16.10	BODY	76.6	Barg
ENDS FLANGES DIMENSIONS	ASME B16.5	SEAT	56.2	Barg
TESTING CODE	API 598	SEAT - AIR	6.0	Barg

REV	DATE	DESCRIPTION	BY	CHK	APP	SCALE:		
						DRAWN	DM	DATE: 16/02/11
						CHECKED	SMN	DATE
						APPROVED	AW	DATE

DRAWING TITLE:
 API 6D, CARBON/STAINLESS STEEL CLASS 300
 FLOATING BALL, RF, FB, BALL VALVE

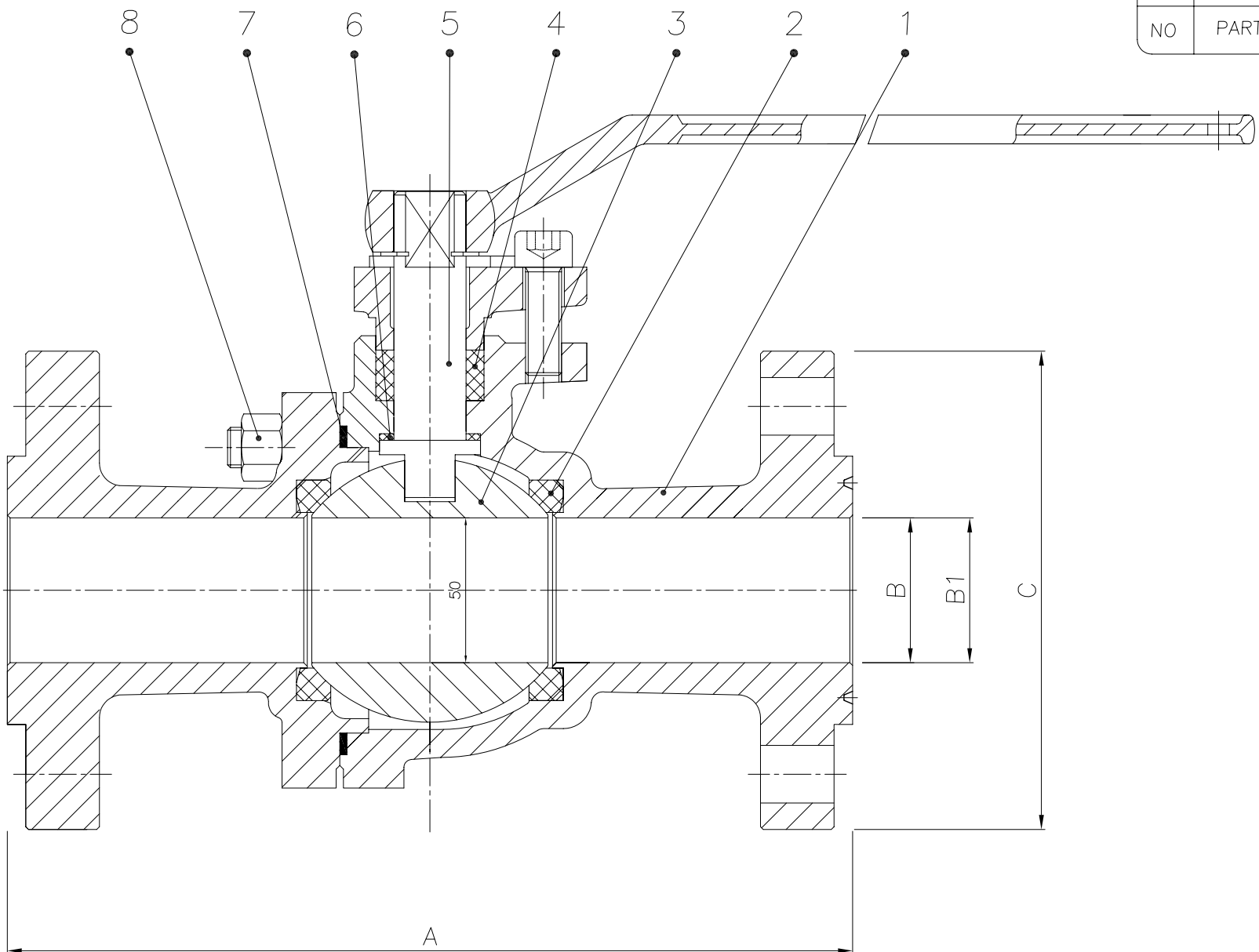
CLIENT:
 VENDOR PO REF:
 EVC REF:

CAD. No. DRAWING NUMBER: 120013 REV 00
 TYPICAL ONLY
 AREA No. | FACILITY | TYPE | SEQ. No. | SHT. No.

8	BOLTING	ASTM A193 B7M/ A194 Gr.2HM	ASTM A193 B8M/ A194 Gr.8M	
7	GASKET	SS304+GRAPHITE		
6	LOWER THRUST WASHER	PTFE		
5	STEM	ASTM A182 F316		
4	STEM SEAL	PTFE		
3	BALL	ASTM A351 CF8M		
2	SEAT RING	RPTFE		
1	BODY/CLOSURE	ASTM A216 WCB/ ASTM A352 LCB	ASTM A351 CF8M	
NO	PART NAME	MATERIAL		NOTES

NOTES	
1	
2	
3	

Size	A	B	B1	C
2"	292	51	51	165
3"	356	77	77	218
4"	432	102	102	273



DESIGN CODE	API 6D/ANSI B16.34	TEST PRESSURES		
FACE TO FACE DIMENSIONS	ASME B16.10	BODY	153.1	Barg
ENDS FLANGES DIMENSIONS	ASME B16.5	SEAT	112.3	Barg
TESTING CODE	API 598	SEAT - AIR	6.0	Barg

REV	DATE	DESCRIPTION	BY	CHK	APP

SCALE:		
DRAWN	DM	DATE: 16/02/12
CHECKED	SMN	DATE
APPROVED	AW	DATE

DRAWING TITLE:
API 6D, CARBON STEEL CLASS 600
FLOATING BALL, RF/RTJ, FB, BALL VALVE

CLIENT:

VENDOR PO REF:

EVC REF:

CAD. No. DRAWING NUMBER: 120020 REV 00
TYPICAL ONLY
AREA No. | FACILITY | TYPE | SEQ. No. | SHT. No.

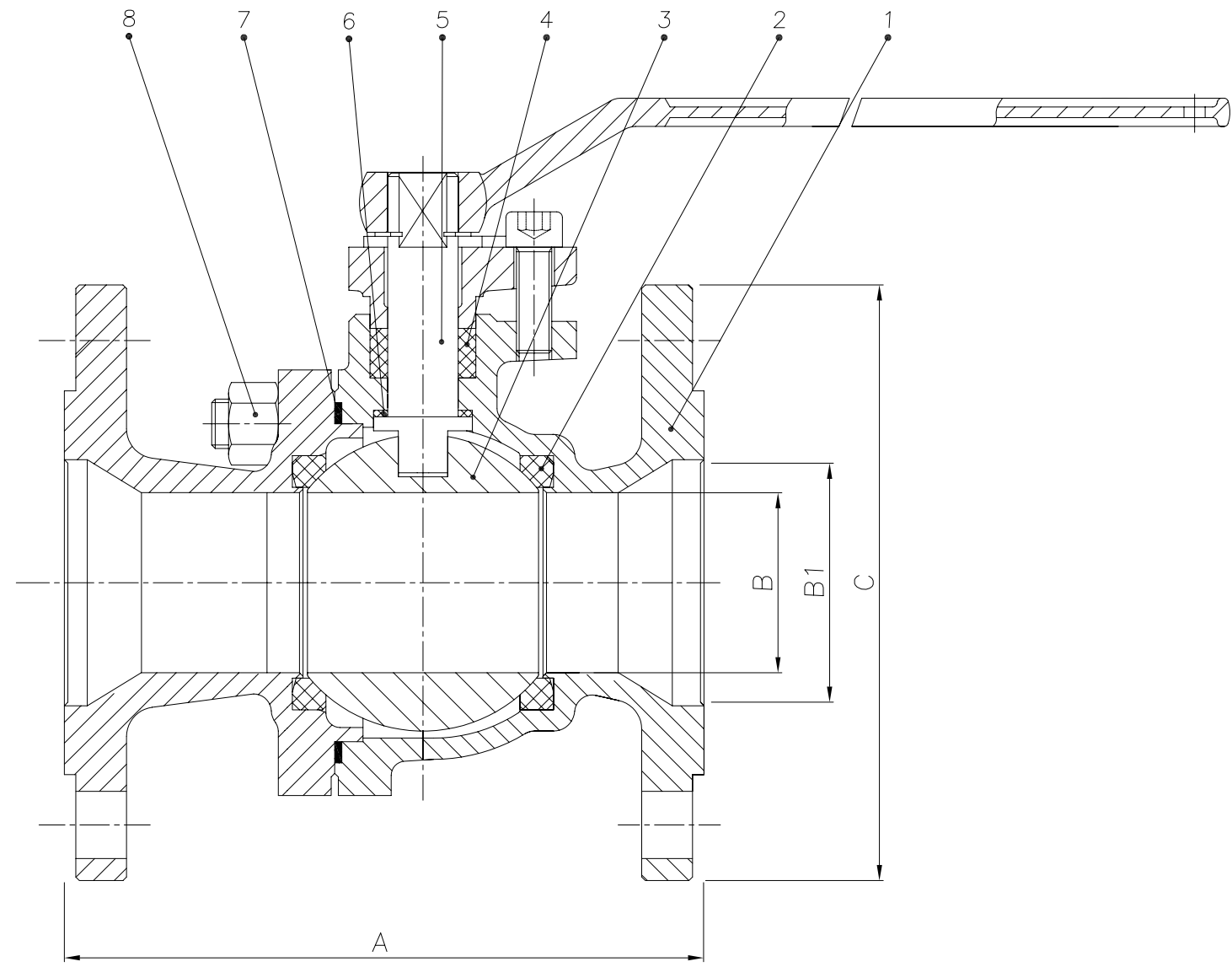
All drawings are subject to copyright, reproduction only with express permission. Subject to updating and revision. Strictly not for reproduction without permission. Materials, design and dimensions subject to contract.

MATERIALS TO NACE MR0175 LATEST EDITION (WETTED PARTS).

8	BOLTING	ASTM A193 B7M/ A194 Gr.2HM	ASTM A193 B8M/ A194 Gr.8M	
7	GASKET	SS304+GRAPHITE		
6	LOWER THRUST WASHER	PTFE		
5	STEM	ASTM A182 F316		
4	STEM SEAL	PTFE		
3	BALL	ASTM A351 CF8M		
2	SEAT RING	RPTFE		
1	BODY/CLOSURE	ASTM A216 WCB/ ASTM A352 LCB	ASTM A351 CF8M	
NO	PART NAME	MATERIAL		NOTES

NOTES	
1	
2	
3	

Size	A	B	B1	C
1/2"x3/8"	108	10	12	89
3/4x1/2"	117	14	20	98
1x3/4"	127	19	25	108
1 1/2x1"	165	25	38	127
2"x1 1/2"	178	38	51	152
3"x2"	229	51	77	190
4"x3"	229	77	102	228
6"x4"	394	102	152	280
8"x6"	457	152	203	343
10"x8"	533	203	254	406



DESIGN CODE	API 6D/ANSI B16.34	TEST PRESSURES		
FACE TO FACE DIMENSIONS	ASME B16.10	BODY	30.0	Barg
ENDS FLANGES DIMENSIONS	ASME B16.5	SEAT	22.0	Barg
TESTING CODE	API 598	SEAT - AIR	6.0	Barg

REV	DATE	DESCRIPTION	BY	CHK	APP	SCALE:		
						DRAWN	DM	DATE: 16/02/2012
						CHECKED	SMN	DATE
						APPROVED	AW	DATE

DRAWING TITLE:
API 6D, CARBON STEEL CLASS 150
FLOATING BALL, RF, RB, BALL VALVE

CLIENT:

VENDOR PO REF:

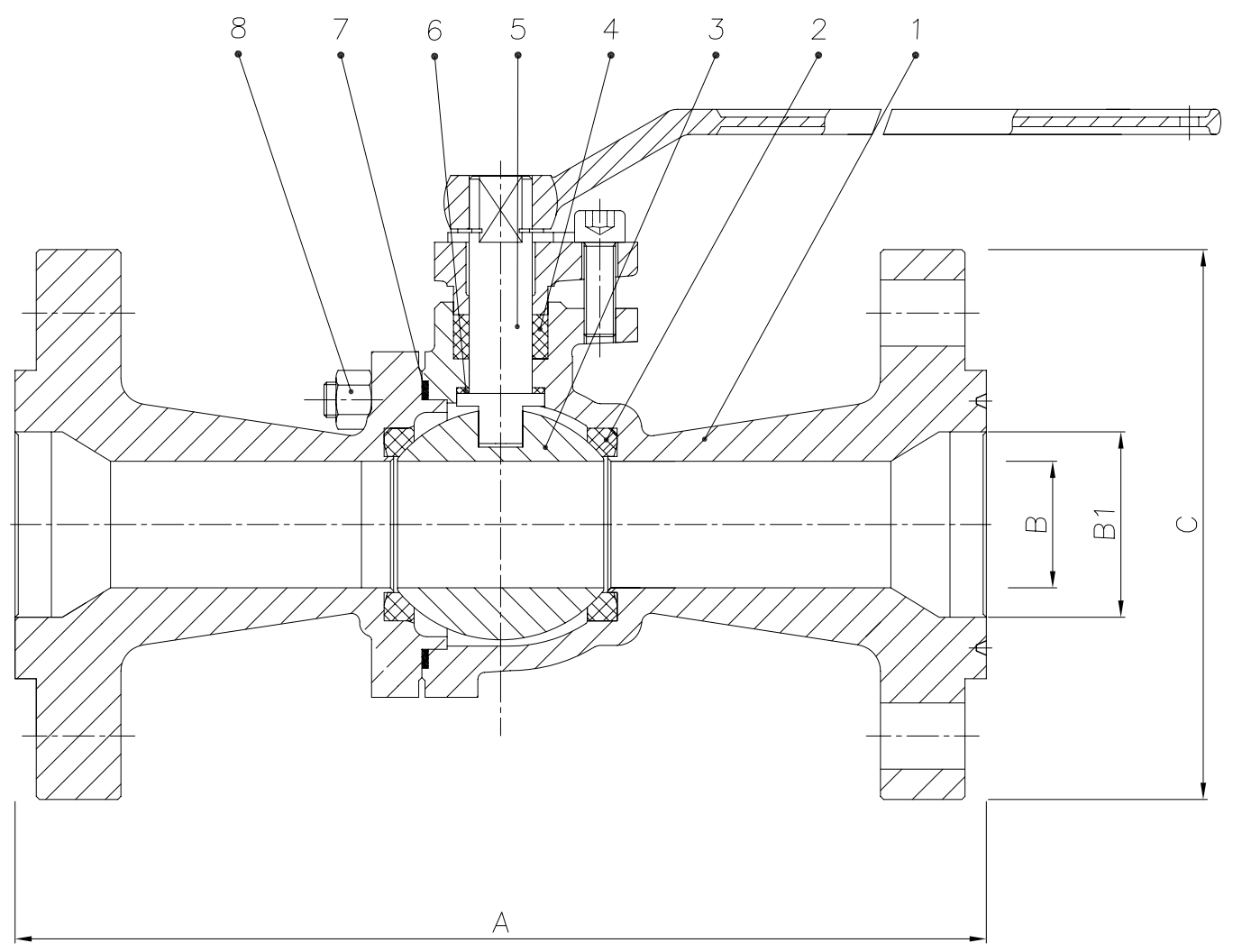
EVC REF:

CAD. No. | DRAWING NUMBER: 120010 | REV 00

AREA No. | FACILITY | TYPE | SEQ. No. | SHT. No.

All drawings are subject to copyright, reproduction only with express permission of Edmund Valve Company (1965) Ltd. Subject to updating and revision. All Edmund valves drawings are product specific, it is the clients responsibility to ensure suitability for service. Materials, design and dimensions subject to contract.

MATERIALS TO MAKE MR0175, LATEST EDITION (WELDED PARTS)



8	BOLTING	ASTM A193 B7M/ A194 Gr.2HM	ASTM A193 B8M/ A194 Gr.8M	
7	GASKET	SS304+GRAPHITE		
6	LOWER THRUST WASHER	PTFE		
5	STEM	ASTM A182 F316		
4	STEM SEAL	PTFE		
3	BALL	ASTM A351 CF8M		
2	SEAT RING	RPTFE		
1	BODY/CLOSURE	ASTM A216 WCB/ ASTM A352 LCB	ASTM A351 CF8M	
NO	PART NAME	MATERIAL		NOTES

NOTES	
1	
2	
3	

Size	A	B	B1	C
2"x1½"	292	38	51	165
3"x2"	356	51	76	210
4"x3"	432	76	102	275
6"x4"	559	102	152	355

All drawings are subject to copyright, reproduction only with express permission. Subject to updating and revision. Strictly not for reproduction without permission. Materials, design and dimensions subject to contract.

DESIGN CODE	API 6D/ANSI B16.34	TEST PRESSURES		
FACE TO FACE DIMENSIONS	ASME B16.10	BODY	153.0	Barg
ENDS FLANGES DIMENSIONS	ASME B16.5	SEAT	112.0	Barg
TESTING CODE	API 598	SEAT - AIR	6.0	Barg

REV	DATE	DESCRIPTION	BY	CHK	APP	SCALE:		
						DRAWN	DM	DATE: 16/02/12
						CHECKED	SMN	DATE
						APPROVED	AW	DATE

DRAWING TITLE:
API 6D, CARBON STEEL CLASS 600
FLOATING BALL, RF/RTJ, RB, BALL VALVE

CLIENT:

VENDOR PO REF:

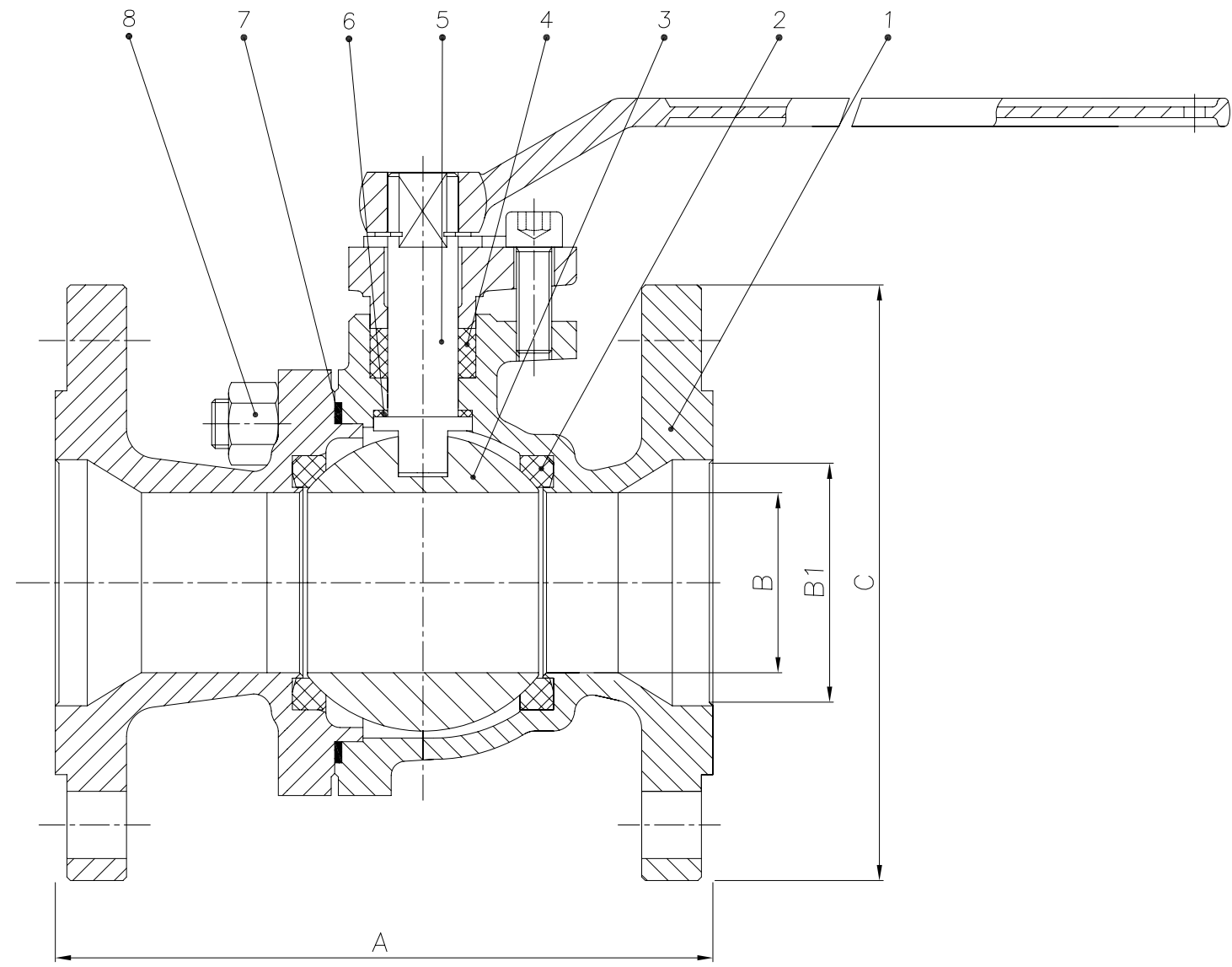
EVC REF:

CAD. No. DRAWING NUMBER: 120019 REV 00
TYPICAL ONLY
AREA No. | FACILITY | TYPE | SEQ. No. | SHT. No.

8	BOLTING	ASTM A193 B7M/ A194 Gr.2HM	ASTM A193 B8M/ A194 Gr.8M	
7	GASKET	SS304+GRAPHITE		
6	LOWER THRUST WASHER	PTFE		
5	STEM	ASTM A182 F316		
4	STEM SEAL	PTFE		
3	BALL	ASTM A351 CF8M		
2	SEAT RING	RPTFE		
1	BODY/CLOSURE	ASTM A216 WCB/ ASTM A352 LCB	ASTM A351 CF8M	
NO	PART NAME	MATERIAL		NOTES

NOTES	
1	
2	
3	

Size	A	B	B1	C
1/2"x3/8"	140	10	12	95
3/4x1/2"	152	12	20	120
1x3/4"	165	20	25	125
1 1/2x1"	191	25	38	155
2"x1 1/2"	216	38	51	165
3"x2"	283	51	77	210
4"x3"	305	77	102	254
6"x4"	403	102	152	318
8"x6"	502	152	203	381
10"x8"	568	203	254	445



DESIGN CODE	API 6D/ANSI B16.34	TEST PRESSURES		
FACE TO FACE DIMENSIONS	ASME B16.10	BODY	76.6	Barg
ENDS FLANGES DIMENSIONS	ASME B16.5	SEAT	56.2	Barg
TESTING CODE	API 598	SEAT - AIR	6.0	Barg

REV	DATE	DESCRIPTION	BY	CHK	APP	SCALE:		
						DRAWN	DM	DATE: 16/02/2012
						CHECKED	SMN	DATE
						APPROVED	AW	DATE

DRAWING TITLE:
API 6D, CARBON STEEL CLASS 300
FLOATING BALL, RF, RB, BALL VALVE

CLIENT:

VENDOR PO REF:

EVC REF:

CAD. No. | DRAWING NUMBER: 1200011 | REV

AREA No. 1 | FACILITY | TYPE | SEQ. No. | SHT. No. | 01

All drawings are subject to copyright, reproduction only with express permission of Edmund Valve Company (1965) Ltd. Subject to updating and revision. All Edmund valves drawings are product specific, it is the clients responsibility to ensure suitability for service. Materials, design and dimensions subject to contract.

MATERIALS TO MAKE MR0175, LATEST EDITION (WETTED PARTS)