

1 | 2 | 3 | 4 | 5 | 6 | 7 | 8

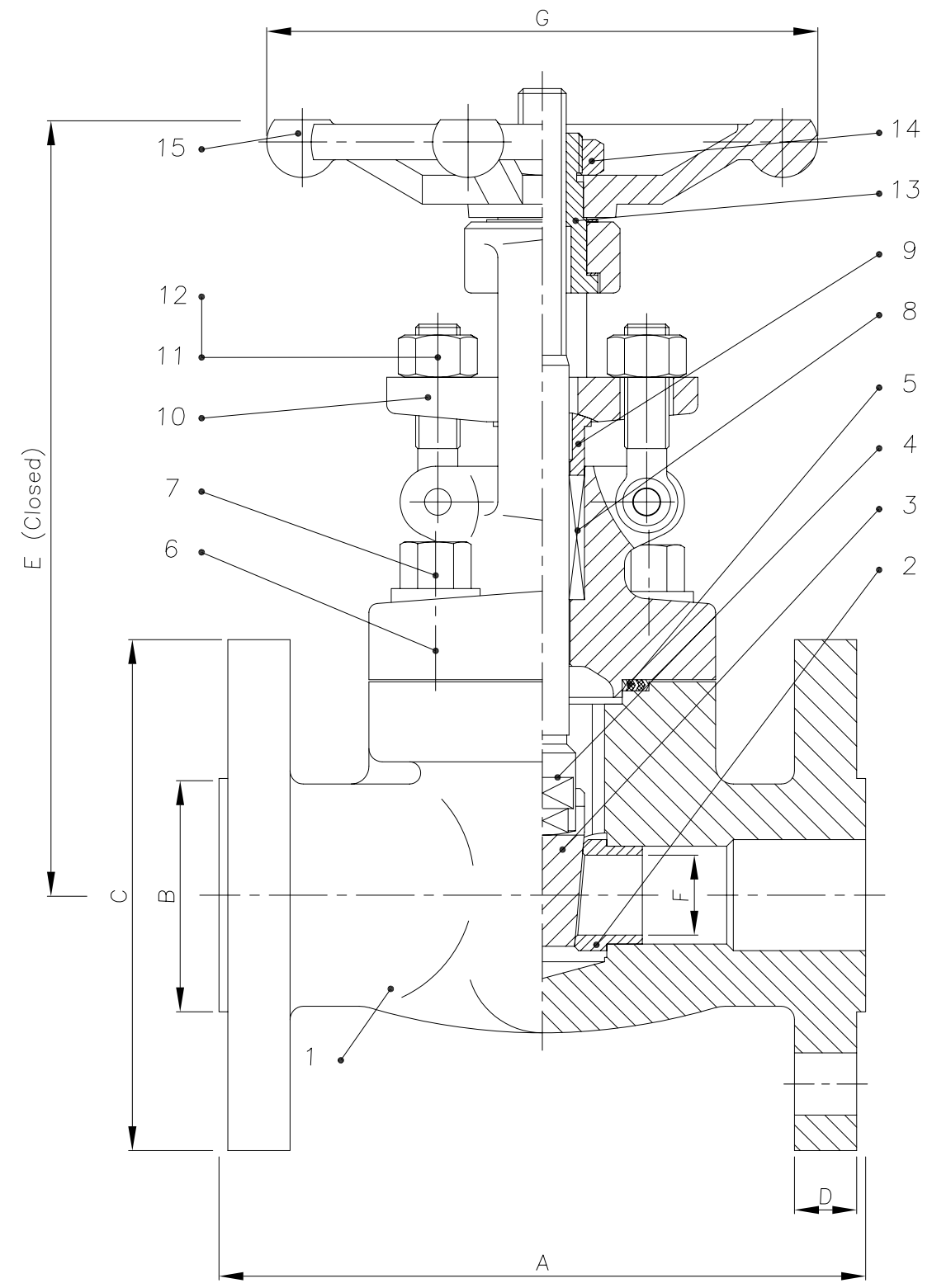
A

B

C

D

E



BILL OF MATERIALS

15	Handwheel	A197	A197
14	Locking nut	Steel	Steel
13	Stem nut	A276 410	A276 410
12	Nut	A194 8	A194 2H
11	Gland eyebolt	A193 B8	A193 B7
10	Gland flange	AISI 316	A105
9	Gland	A276 304	A276 420
8	Packing	Graphite	Graphite
7	Bolt	A193 B8(M)	A193 B7(M)
6	Bonnet	A182 F316(L)	A105
5	Gasket	316SS+Graphite	316SS+Graphite
4	Stem	A182 F316L	A182 F6a
3	Wedge	A182 F316(L)+STL	A182 F6a+STL
2	Seat	A182 F316(L)+STL	A276 420+STL
1	Body	A182 F316L	A105
NO.	Part Name	Materials	Materials

NB	DN	A	B	C	D	E	F	G	Wgt
1/2"	15	108	34.9	89	11.5	178	10	100	3.4
3/4"	20	117	42.9	99	13	182	14	100	3.8
1"	25	127	50.8	108	14.5	220	18	125	5.7
1 1/4"	32	140	63.5	117	16	221	22	160	12
1 1/2"	40	165	73.0	127	17.5	248	29	160	12
2"	50	178	92.1	152	19.5	283	36	180	16

All drawings are subject to copyright, reproduction only with express permission of Edmund Valve Company (1965) Ltd. Subject to updating and revision. All Edmund valves drawings are product specific, it is the clients responsibility to ensure suitability for service. Materials, design and dimensions subject to contract.

DESIGN CODE	API 602/ANSI B16.34	TEST PRESSURES		
FACE TO FACE DIMENSIONS	ANSI B 16.10	BODY	30.0	Barg
ENDS FLANGES DIMENSIONS	ASME B16.5	SEAT	22.0	Barg
TESTING CODE	API 598	BACKSEAT	22.0	Barg
		AIR - SEAT	6.0	Barg

REV	DATE	DESCRIPTION	BY	CHK	APP	SCALE:		
-	-	-				DRAWN	DM	DATE-07.12.10
						CHECKED	SMN	DATE
						APPROVED	AW	DATE

Materials available on request: Stainless steel all grades; Duplex & Super Duplex; Chrome-moly; Inconel; Monel;

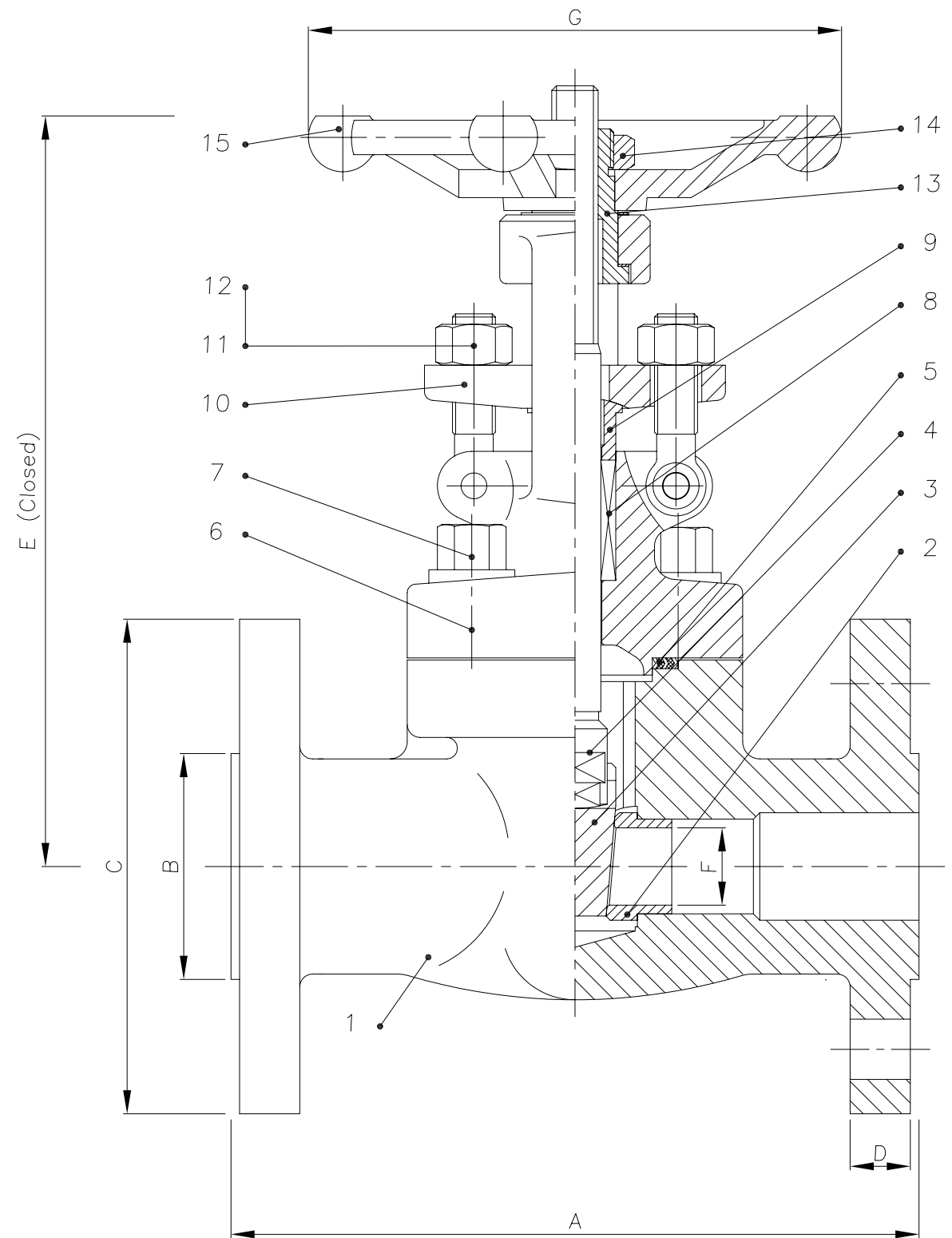
DRAWING TITLE:
API FORGED, CLASS 150
BOLTED BONNET, RF, GATE VALVES

CLIENT: .
VENDOR PO REF: .
EVC REF: .



CAD. No. | DRAWING NUMBER: 120177 | REV 00
AREA No. | FACILITY | TYPE | SEQ. No. | SHT. No.

1 | 2 | 3 | 4 | 5 | 6 | 7 | 8



BILL OF MATERIALS			
15	Handwheel	A197	A197
14	Locking nut	Steel	Steel
13	Stem nut	A276 410	A276 410
12	Nut	A194 8	A194 2H
11	Gland eyebolt	A193 B8	A193 B7
10	Gland flange	AISI 316	A105
9	Gland	A276 304	A276 420
8	Packing	Graphite	Graphite
7	Bolt	A193 B8(M)	A193 B7(M)
6	Bonnet	A182 F316(L)	A105
5	Gasket	316SS+Graphite	316SS+Graphite
4	Stem	A182 F316L	A182 F6a
3	Wedge	A182 F316(L)+STL	A182 F6a+STL
2	Seat	A182 F316(L)+STL	A276 420+STL
1	Body	A182 F316L	A105
NO.	Part Name	Materials	Materials

NB	DN	A	B	C	D	E	F	G	Wgt
1/2"	15	140	34.9	95	14.5	159	10	100	3.9
3/4"	20	152	42.9	117	16	163	14	100	5
1"	25	165	50.8	124	17.5	201	18	125	6.2
1 1/4"	32	178	63.5	133	19.57	221	22	160	12
1 1/2"	40	190	73.0	156	21	248	29	160	14.5
2"	50	216	92.1	163	22.5	283	36	180	16

Materials available on request: Stainless steel all grades; Duplex & Super Duplex; Chrome-moly; Inconel; Monel;

REV	DATE	DESCRIPTION	BY	CHK	APP	SCALE:		
-	-	-				DRAWN	DM	DATE-07.12.10
						CHECKED	SMN	DATE
						APPROVED	AW	DATE

DESIGN CODE	API 602/ANSI B16.34	TEST PRESSURES		
FACE TO FACE DIMENSIONS	ANSI B 16.10	BODY	76.0	Barg
ENDS FLANGES DIMENSIONS	ASME B16.5	SEAT	55.0	Barg
TESTING CODE	API 598	BACKSEAT	55.0	Barg
		AIR - SEAT	6.0	Barg

DRAWING TITLE:
API FORGED, CLASS 1500
BOLTED BONNET, RF, GATE VALVES

CLIENT: .

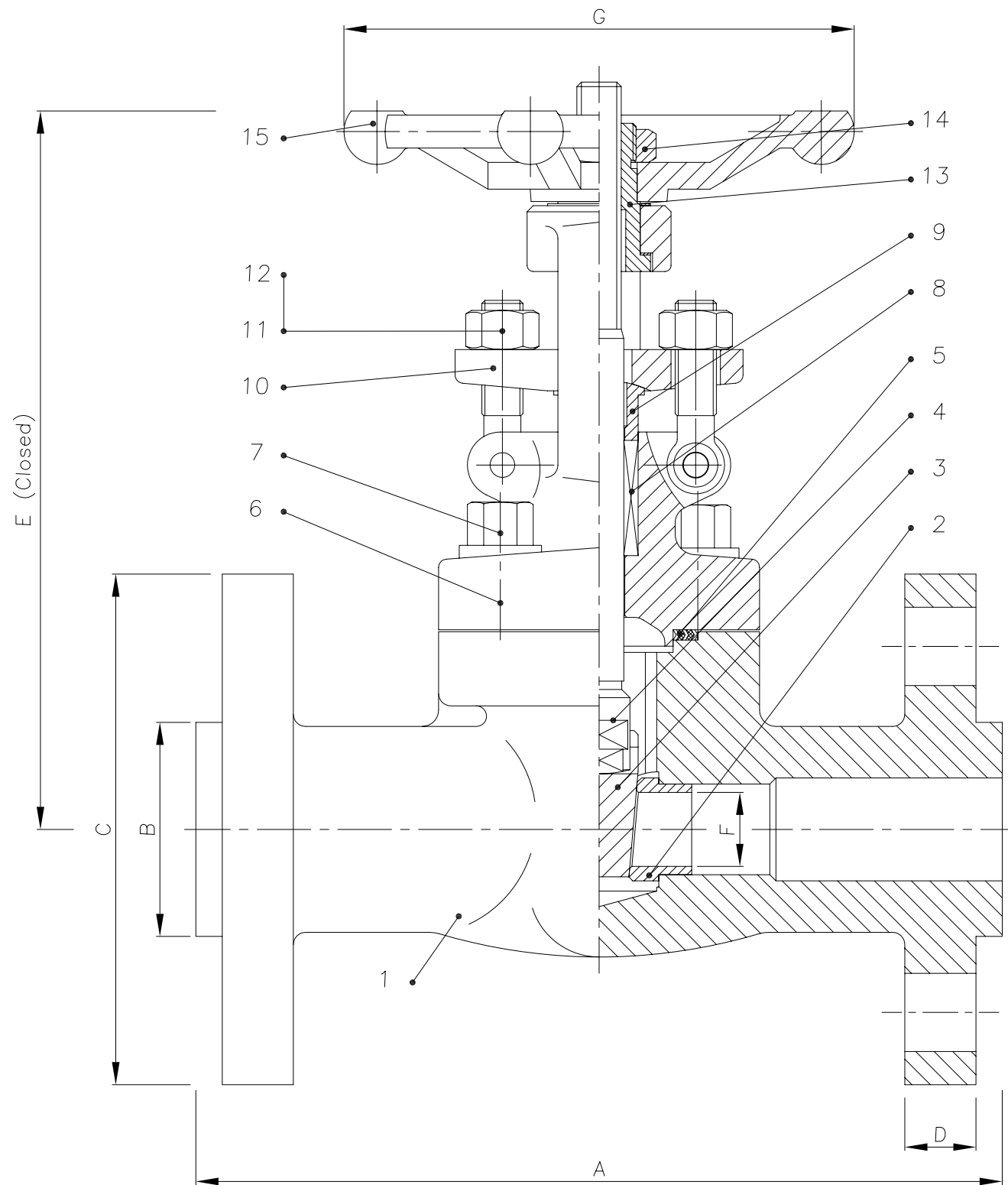
VENDOR PO REF: .

EVC REF: .

CAD. No. DRAWING NUMBER: 120176 REV 00

AREA No. FACILITY TYPE SEQ. No. SHT. No.

MATERIALS TO MAKE MR0175 LATEST EDITION (WETTED PARTS)
 All drawings are subject to copyright, reproduction only with express permission of Edmund Valve Company (1965) Ltd. Subject to updating and revision. All Edmund valves drawings are product specific, it is the clients responsibility to ensure suitability for service. Materials, design and dimensions subject to contract.



BILL OF MATERIALS			
15	Handwheel	A197	A197
14	Locking nut	Steel	Steel
13	Stem nut	A276 410	A276 410
12	Nut	A194 8	A194 2H
11	Gland eyebolt	A193 B8	A193 B7
10	Gland flange	AISI 316	A105
9	Gland	A276 304	A276 420
8	Packing	Graphite	Graphite
7	Bolt	A193 B8(M)	A193 B7(M)
6	Bonnet	A182 F316(L)	A105
5	Gasket	316SS+Graphite	316SS+Graphite
4	Stem	A182 F316L	A182 F6a
3	Wedge	A182 F316(L)+STL	A182 F6a+STL
2	Seat	A182 F316(L)+STL	A276 420+STL
1	Body	A182 F316L	A105
NO.	Part Name	Materials	Materials

NB	DN	A	B	C	D	E	F	G	Wgt
1/2"	15	165	34.9	66.7	14.5	159	10	100	4
3/4"	20	190	42.9	82.5	16	163	14	100	5.2
1"	25	216	50.8	88.9	17.5	201	18	125	7.5
1 1/4"	32	229	63.5	98.4	21	221	22	160	12.5
1 1/2"	40	241	73.0	114.3	22.5	248	29	160	14.5
2"	50	292	92.1	127	25.5	283	36	180	18.8

Materials available on request: Stainless steel all grades; Duplex & Super Duplex; Chrome-moly; Inconel; Monel;

All drawings are subject to copyright, reproduction only with express permission of Edmund Valve Company (1965) Ltd. Subject to updating and revision. All Edmund valves drawings are product specific, it is the clients responsibility to ensure suitability for service. Materials, design and dimensions subject to contract.

DESIGN CODE	API 602/ANSI B16.34	TEST PRESSURES		
FACE TO FACE DIMENSIONS	ANSI B 16.10	BODY	153.00	Barg
ENDS FLANGES DIMENSIONS	ASME B16.5	SEAT	112.00	Barg
TESTING CODE	API 598	BACKSEAT	112.00	Barg
		AIR - SEAT	6.0	Barg

REV	DATE	DESCRIPTION	BY	CHK	APP	SCALE:		
-	-	-				DRAWN	DM	DATE-07.12.10
						CHECKED	SMN	DATE
						APPROVED	AW	DATE

DRAWING TITLE:
API FORGED CLASS 600
BOLTED BONNET, RF, GATE VALVES

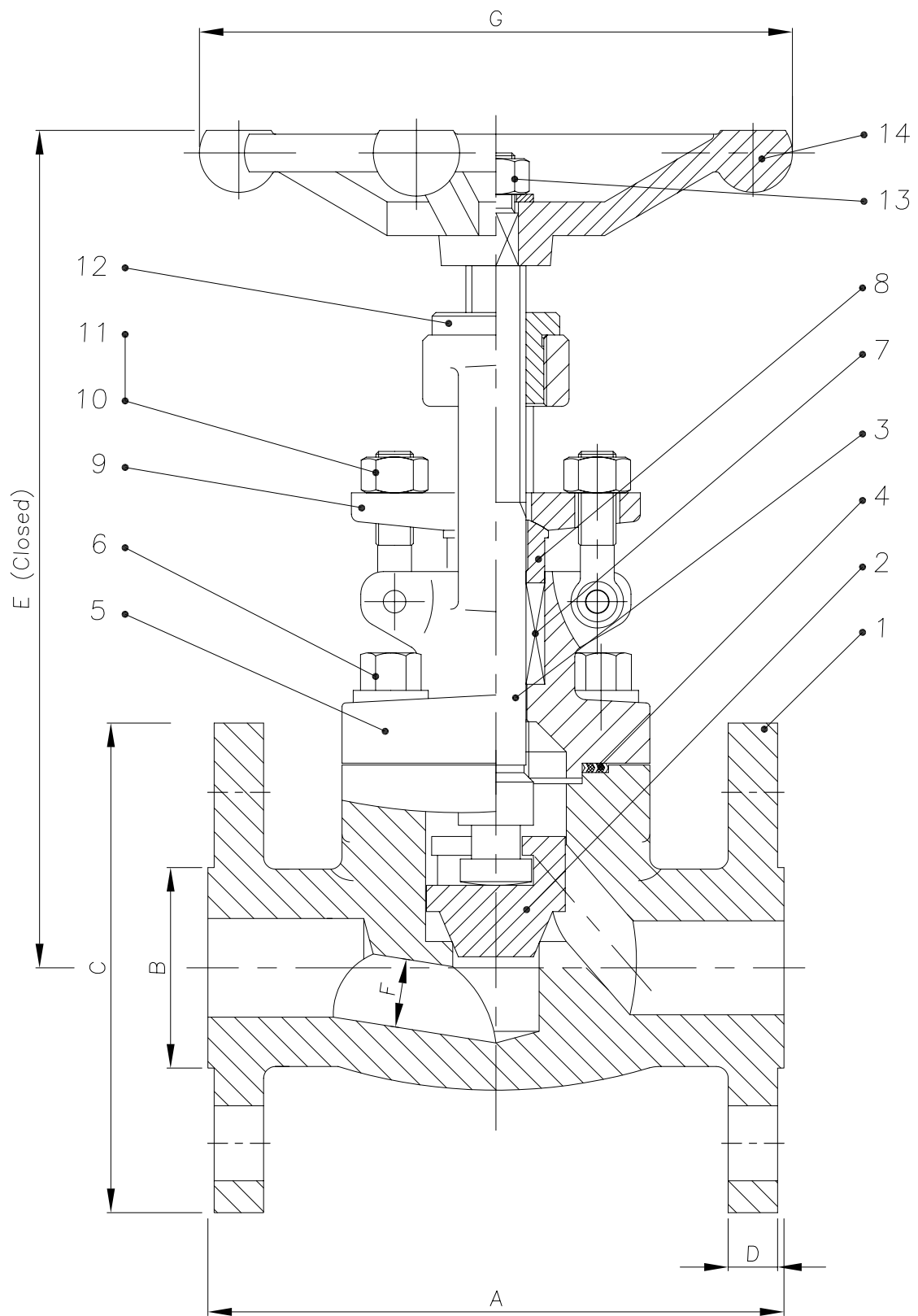
CLIENT: .

VENDOR PO REF: .

EVC REF: .

CAD. No. DRAWING NUMBER: 120175 REV 00

AREA No. FACILITY TYPE SEQ. No. SHT. No.



BILL OF MATERIALS			
14	Handwheel	A197	A197
13	Locking nut	Steel	Steel
12	Stem nut	A276 410	A276 410
11	Nut	A194 8	A194 2H
10	Gland eyebolt	A193 B8	A193 B7
9	Gland flange	AISI 316	A105
8	Gland	A276 304	A276 420
7	Packing	Graphite	Graphite
6	Bolt	A193 B8(M)	A193 B7(M)
5	Bonnet	A182 F316(L)	A105
4	Gasket	316SS+Graphite	316SS+Graphite
3	Stem	A182 F316L	A182 F6a
2	Wedge	A182 F316(L)+STL	A182 F6a+STL
1	Body+Seat*	A182 F316(L)+STL	A105+STL
NO.	Part Name	Materials	Materials

*: Seat integral

NB	DN	A	B	C	D	E	F	G	Wgt
1/2"	15	108	60.3	89	11.5	183	10	100	3.3
3/4"	20	117	69.8	99	13	186	13	100	4
1"	25	127	79.4	108	14.5	231	18	125	5.6
1 1/4"	32	140	88.9	117	16	235	23	160	7
1 1/2"	40	165	98.4	127	17.5	267	27	160	8.5
2"	50	203	120.6	152	19.5	300	33	180	17.5

Materials available on request: Stainless steel all grades; Duplex & Super Duplex; Chrome-moly; Inconel; Monel;

REV	DATE	DESCRIPTION	BY	CHK	APP	SCALE:		
-	-	-				DRAWN	DM	DATE: 08/12/10
						CHECKED	SMN	DATE
						APPROVED	AW	DATE

DESIGN CODE	API 602/ANSI B16.34	TEST PRESSURES		
FACE TO FACE DIMENSIONS	ANSI B 16.10	BODY	30.0	Barg
ENDS FLANGES DIMENSIONS	ASME B16.5	SEAT	22.0	Barg
TESTING CODE	API 598	BACKSEAT	22.0	Barg
		AIR - SEAT	6.0	Barg

DRAWING TITLE:
API FORGED, CLASS 150
BOLTED BONNET, RF, GLOBE VALVES

CLIENT: .

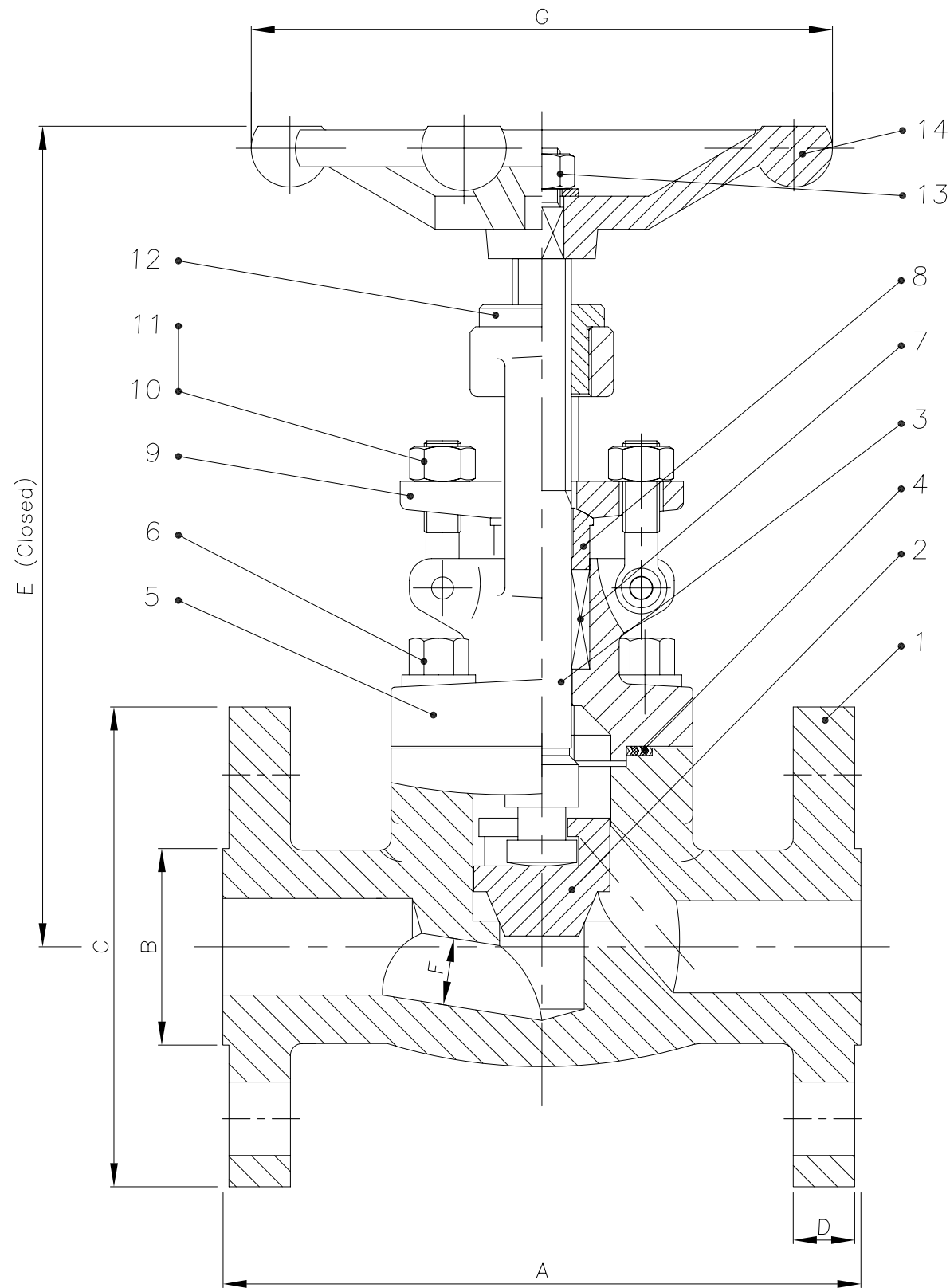
VENDOR PO REF: .

EVC REF: .

CAD. No. DRAWING NUMBER: 120179 REV 00

AREA No. FACILITY TYPE SEQ. No. SHT. No.

MATERIALS TO MAKE MRQ175 LATEST EDITION (WETTED PARTS)
 All drawings are subject to copyright, reproduction only with express permission of Edmund Valve Company (1965) Ltd. Subject to updating and revision. All Edmund valves drawings are product specific, it is the clients responsibility to ensure suitability for service. Materials, design and dimensions subject to contract.



BILL OF MATERIALS			
NO.	Part Name	Materials	Materials
14	Handwheel	A197	A197
13	Locking nut	Steel	Steel
12	Stem nut	A276 410	A276 410
11	Nut	A194 8	A194 2H
10	Gland eyebolt	A193 B8	A193 B7
9	Gland flange	AISI 316	A105
8	Gland	A276 304	A276 420
7	Packing	Graphite	Graphite
6	Bolt	A193 B8(M)	A193 B7(M)
5	Bonnet	A182 F316(L)	A105
4	Gasket	316SS+Graphite	316SS+Graphite
3	Stem	A182 F316L	A182 F6a
2	Wedge	A182 F316(L)+STL	A182 F6a+STL
1	Body+Seat*	A182 F316(L)+STL	A105+STL

*: Seat integral

NB	DN	A	B	C	D	E	F	G	Wgt
1/2"	15	152	35	95	14.5	183	10	100	4
3/4"	20	178	43	117	16	186	13	100	5
1"	25	203	51	124	17.5	231	18	125	7.3
1 1/4"	32	216	63.5	133	19.5	235	23	160	12
1 1/2"	40	229	73	156	21	267	27	160	14
2"	50	267	92	163	22.5	300	33	180	19

All drawings are subject to copyright, reproduction only with express permission of Edmund Valve Company (1965) Ltd. Subject to updating and revision. All Edmund valves drawings are product specific, it is the clients responsibility to ensure suitability for service. Materials, design and dimensions subject to contract.

DESIGN CODE	API 602/ANSI B16.34	TEST PRESSURES		
FACE TO FACE DIMENSIONS	ANSI B 16.10	BODY	76.0	Barg
ENDS FLANGES DIMENSIONS	ASME B16.5	SEAT	56.0	Barg
TESTING CODE	API 598	BACKSEAT	56.0	Barg
		AIR - SEAT	6.0	Barg

REV	DATE	DESCRIPTION	BY	CHK	APP	SCALE:		
-	-	-				DRAWN	DM	DATE
						CHECKED	SMN	DATE
						APPROVED	AW	DATE

Materials available on request: Stainless steel all grades; Duplex & Super Duplex; Chrome-moly; Inconel; Monel;

DRAWING TITLE:
 API FORGED, CLASS 300
 BOLTED BONNET, RF, GLOBE VALVES

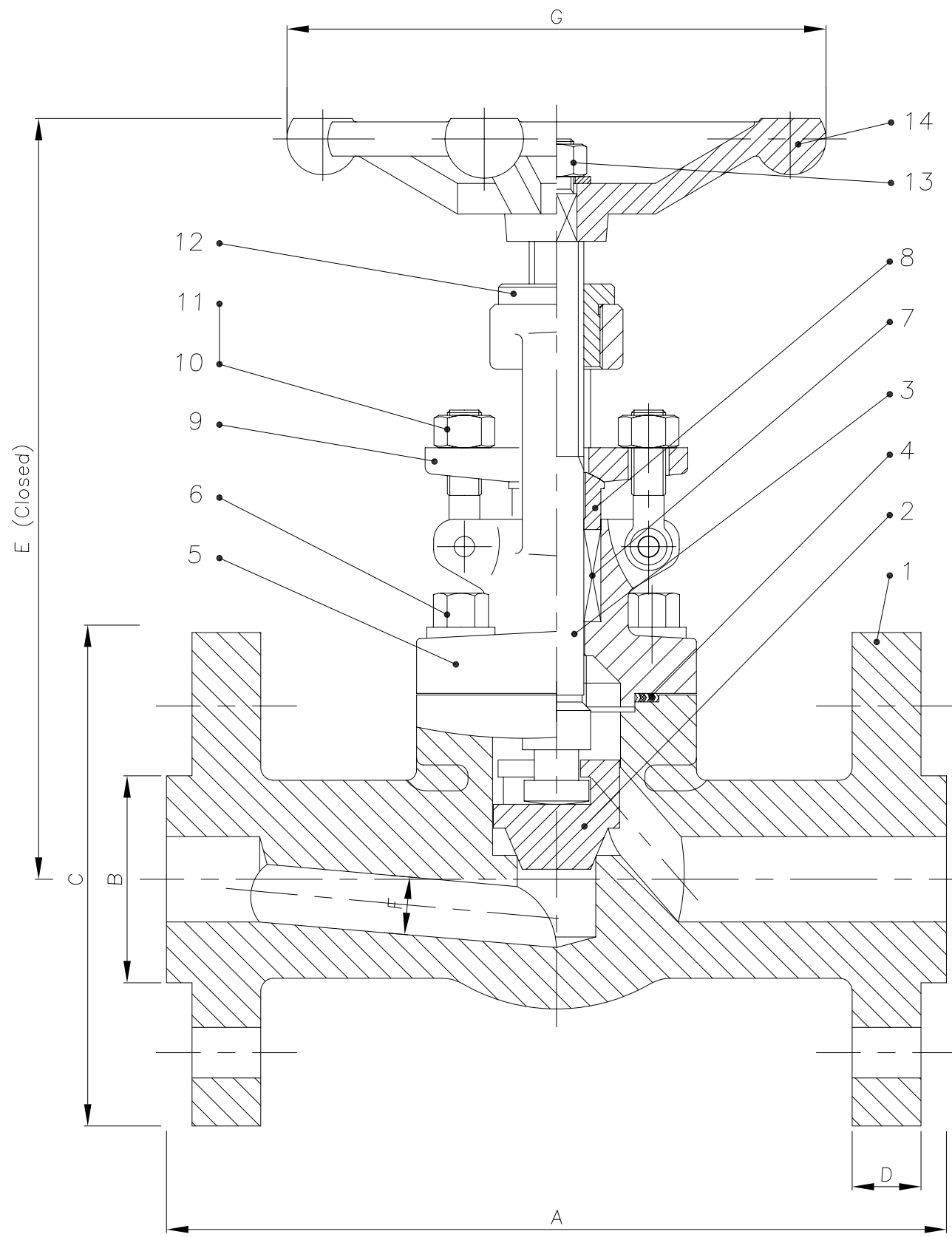
CLIENT: .

VENDOR PO REF: .

EVC REF: .

CAD. No. DRAWING NUMBER: 120178 REV 00

AREA No. FACILITY TYPE SEQ. No. SHT. No.



BILL OF MATERIALS			
NO.	Part Name	Materials	Materials
14	Handwheel	A197	A197
13	Locking nut	Steel	Steel
12	Stem nut	A276 410	A276 410
11	Nut	A194 8	A194 2H
10	Gland eyebolt	A193 B8	A193 B7
9	Gland flange	AISI 316	A105
8	Gland	A276 304	A276 420
7	Packing	Graphite	Graphite
6	Bolt	A193 B8(M)	A193 B7(M)
5	Bonnet	A182 F316(L)	A105
4	Gasket	316SS+Graphite	316SS+Graphite
3	Stem	A182 F316L	A182 F6a
2	Wedge	A182 F316(L)+STL	A182 F6a+STL
1	Body+Seat*	A182 F316(L)+STL	A105+STL
NO.	Part Name	Materials	Materials

*: Seat integral

NB	DN	A	B	C	D	E	F	G	Wgt
1/2"	15	165	34.9	95	14.3	148	9	80	3.6
3/4"	20	190	42.9	117	15.9	156	12.5	80	5.1
1"	25	216	50.8	124	17.5	182	17.5	100	7.8
1 1/4"	32	229	63.5	133	20.6	212	22	120	13.1
1 1/2"	40	241	73.0	156	22.2	240	28	140	14.2
2"	50	292	92.1	165	25.4	300	33	140	19.4

All drawings are subject to copyright, reproduction only with express permission of Edmund Valve Company (1965) Ltd. Subject to updating and revision. All Edmund valves drawings are product specific, it is the clients responsibility to ensure suitability for service. Materials, design and dimensions subject to contract.

Materials available on request: Stainless steel all grades; Duplex & Super Duplex; Chrome-moly; Inconel; Monel;

DESIGN CODE	API 602/ANSI B16.34	TEST PRESSURES		
FACE TO FACE DIMENSIONS	ANSI B 16.10	BODY	153.15	Barg
ENDS FLANGES DIMENSIONS	ASME B16.5	SEAT	112.31	Barg
TESTING CODE	API 598	BACKSEAT	112.31	Barg
		AIR - SEAT	6.0	Barg

REV	DATE	DESCRIPTION	BY	CHK	APP	SCALE:		
01	10/05/2010	Addition of RTJ flange dims				DRAWN	DM	DATE
						CHECKED	SMN	DATE
						APPROVED	AW	DATE

DRAWING TITLE:
API FORGED, CLASS 600
BOLTED BONNET, RF, GLOBE VALVES

CLIENT: .

VENDOR PO REF: .

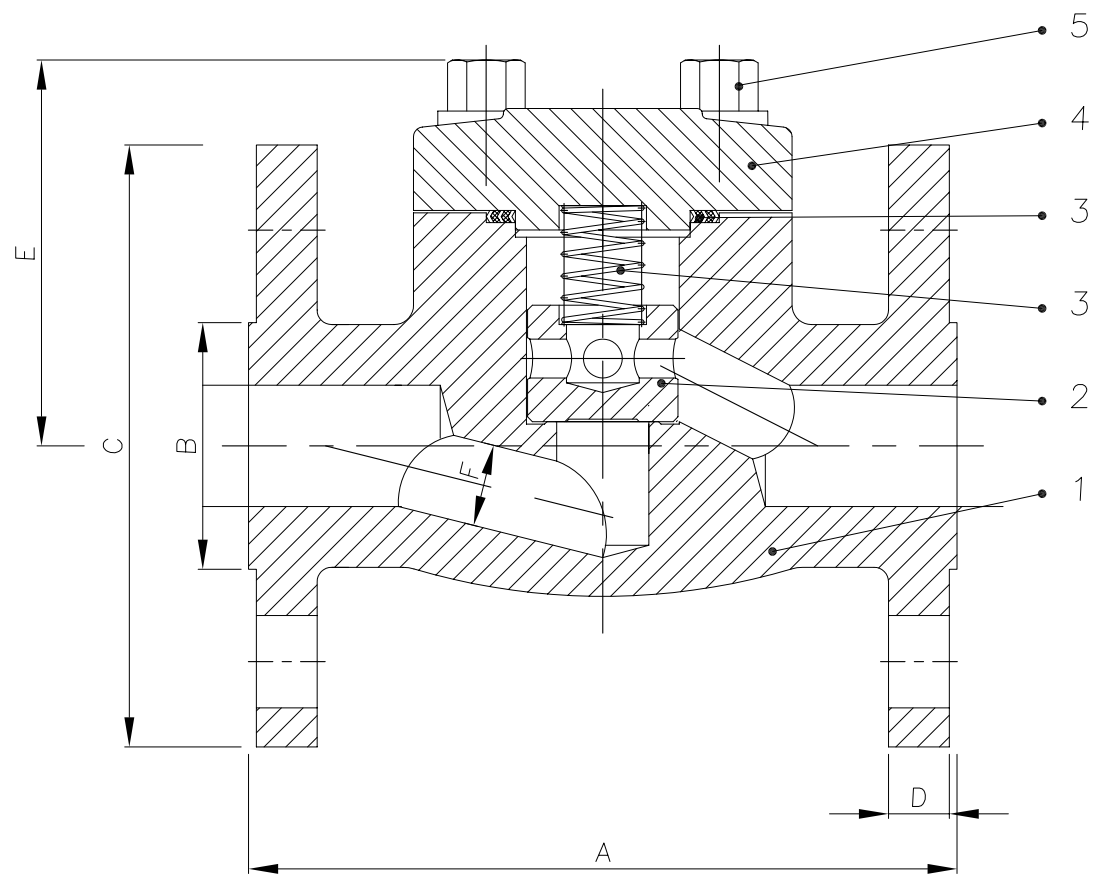
EVC REF: .

CAD. No. DRAWING NUMBER: 120161 REV 00

AREA No. | FACILITY | TYPE | SEQ. No. | SHT. No.

BILL OF MATERIALS			
NO.	Part Name	Materials	Materials
6	Bolt	A193 B8(M)	A193 B7(M)
5	Bonnet	A182 F316(L)	A105
4	Gasket	304SS+Graphite	304SS+Graphite
3	Spring	A276 304	A276 304
2	Disc	A182 F316(L)+STL	A276 420+STL
1	Body+Seat*	A182 F316(L)+STL	A105+STL

*: Seat integral



L · C · A · T · H · Q · W

NB	DN	A	B	C	D	E	F	G	Wgt	
60.3	1/2"	15	108	35	89	11.5	78	10	-	2.9
69.8	3/4"	20	117	43	99	13	81	13	-	3.2
79.4	1"	25	127	51	108	14.5	84	18	-	4.3
88.9	1 1/4"	32	140	63.5	117	16	98	23	-	5.8
98.4	1 1/2"	40	165	73	127	17.5	105	27	-	6.5
120.6	2"	50	203	92	152	19.5	124	33	-	14.5

Materials available on request: Stainless steel all grades; Duplex & Super Duplex; Chrome-moly; Inconel; Monel;

REV	DATE	DESCRIPTION	BY	CHK	APP	SCALE:		
-	-	-				DRAWN	DM	DATE: 14/12/10
						CHECKED	SMN	DATE
						APPROVED	AW	DATE

DESIGN CODE	API 602/ANSI B16.34	TEST PRESSURES		
FACE TO FACE DIMENSIONS	ANSI B 16.10	BODY	30.0	Barg
ENDS FLANGES DIMENSIONS	ASME B16.5	SEAT	22.0	Barg
TESTING CODE	API 598	BACKSEAT	22.0	Barg
		AIR - SEAT	6.0	Barg

DRAWING TITLE:
API FORGED, CLASS 150
BOLTED COVER, RF, PISTON CHECK VALVES

CLIENT: .

VENDOR PO REF: .

EVC REF: .

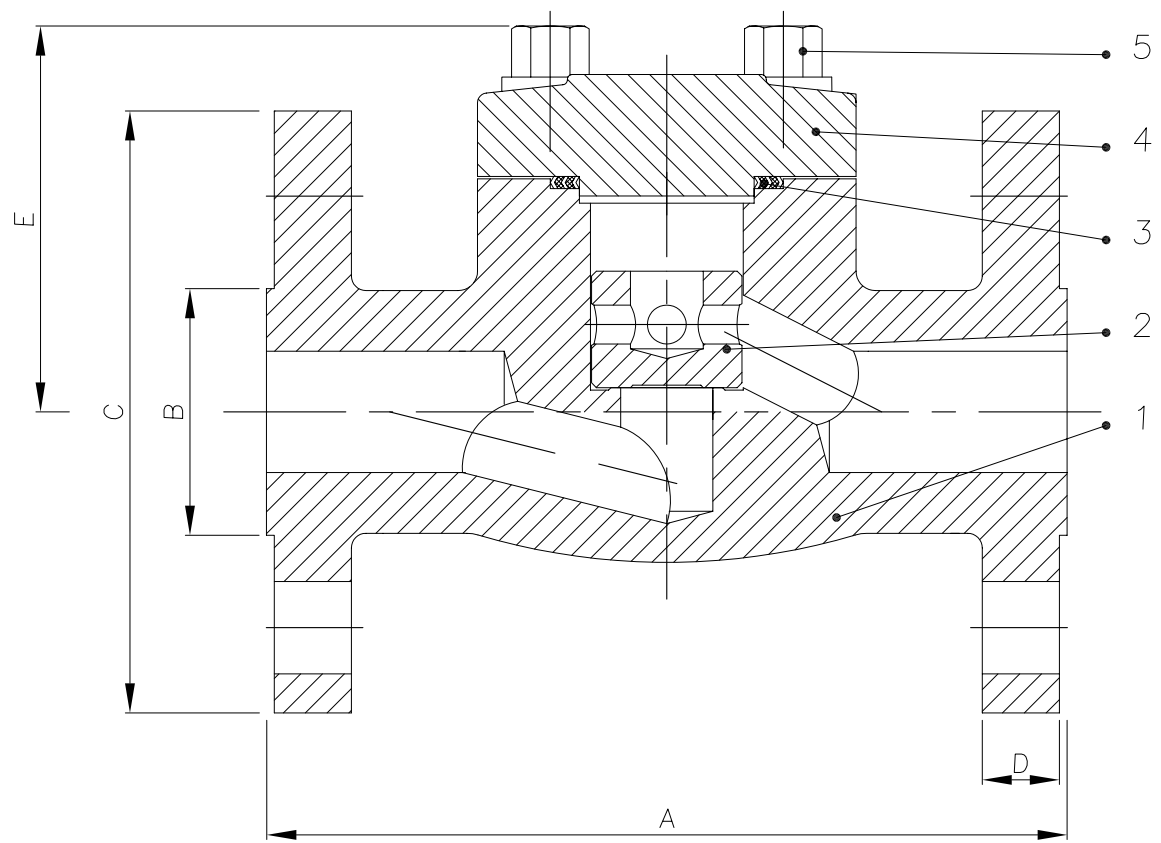
CAD. No. DRAWING NUMBER: 120183 REV 00

AREA No. | FACILITY | TYPE | SEQ. No. | SHT. No.

All drawings are subject to copyright, reproduction only with express permission of Edmund Valve Company (1965) Ltd. Subject to updating and revision. All Edmund valves drawings are product specific, it is the clients responsibility to ensure suitability for service. Materials, design and dimensions subject to contract. MATERIALS TO MAKE MR0175 LATEST EDITION (WETTED PARTS)

BILL OF MATERIALS			
NO.	Part Name	Materials	Materials
6	Bolt	A193 B8(M)	A193 B7(M)
5	Bonnet	A182 F316(L)	A105
4	Gasket	304SS+Graphite	304SS+Graphite
3	Spring	A276 304	A276 304
2	Disc	A182 F316(L)+STL	A276 420+STL
1	Body+Seat*	A182 F316(L)+STL	A105+STL

*: Seat integral



NB	DN	A	B	C	D	E	F	G	Wgt
1/2"	15	152	35	95	14.5	63	10	-	3.6
3/4"	20	178	43	117	16	64	13	-	4.2
1"	25	203	51	124	17.5	79	18	-	6.1
1 1/4"	32	216	63.5	133	19.5	84	23	-	9.8
1 1/2"	40	229	73	156	21	105	27	-	13
2"	50	267	92	163	22.5	124	33	-	16

Materials available on request: Stainless steel all grades; Duplex & Super Duplex; Chrome-moly; Inconel; Monel;

REV	DATE	DESCRIPTION	BY	CHK	APP	SCALE:		
-	-	-				DRAWN	DM	DATE: 14/12/10
						CHECKED	SMN	DATE
						APPROVED	AW	DATE

DESIGN CODE	API 602/ANSI B16.34	TEST PRESSURES		
FACE TO FACE DIMENSIONS	ANSI B 16.10	BODY	76.0	Barg
ENDS FLANGES DIMENSIONS	ASME B16.5	SEAT	56.0	Barg
TESTING CODE	API 598	BACKSEAT	56.0	Barg
		AIR - SEAT	6.0	Barg

DRAWING TITLE:
API FORGED, CLASS 300
BOLTED COVER, RF, PISTON CHECK VALVES

CLIENT: .

VENDOR PO REF: .

EVC REF: .

CAD. No. DRAWING NUMBER: 120182 REV 00

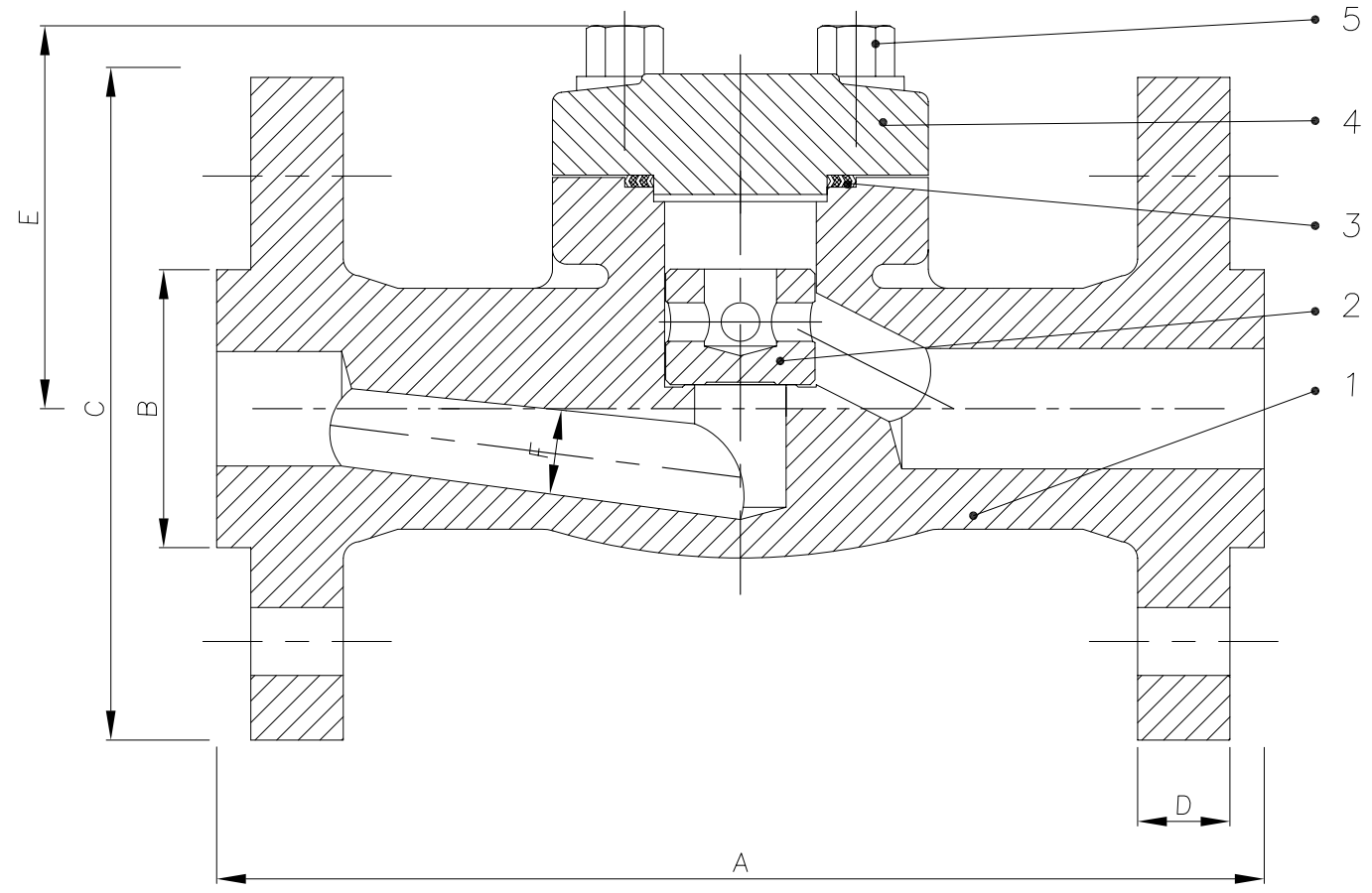
AREA No. FACILITY TYPE SEQ. No. SHT. No.

All drawings are subject to copyright, reproduction only with express permission of Edmund Valve Company (1965) Ltd. Subject to updating and revision. All Edmund valves drawings are product specific, it is the clients responsibility to ensure suitability for service. Materials, design and dimensions subject to contract.

MATERIALS TO MAKE MR0175, LATEST EDITION (WELDED PARTS)

BILL OF MATERIALS			
NO.	Part Name	Materials	Materials
6	Bolt	A193 B8(M)	A193 B7(M)
5	Bonnet	A182 F316(L)	A105
4	Gasket	304SS+Graphite	304SS+Graphite
3	Spring	A276 304	A276 304
2	Disc	A182 F316(L)+STL	A276 420+STL
1	Body+Seat*	A182 F316(L)+STL	A105+STL

*: Seat integral



NB	DN	A	B	C	D	E	F	G	Wgt
1/2"	15	165	35	95	14.3	63	9	-	4.1
3/4"	20	190	43	117	15.9	64	12.5	-	4.7
1"	25	216	51	124	17.5	79	17.5	-	6.3
1 1/4"	32	229	63.5	133	20.6	84	22	-	12
1 1/2"	40	241	73	156	22.2	105	28	-	13
2"	50	292	92	165	25.4	124	33	-	17

Materials available on request: Stainless steel all grades; Duplex & Super Duplex; Chrome-moly; Inconel; Monel;

DRAWING TITLE:
API FORGED, CLASS 600
BOLTED COVER, RF, PISTON CHECK VALVES

CLIENT: .

VENDOR PO REF: .

EVC REF: .



CAD. No. DRAWING NUMBER: 120181 REV 00

AREA No. FACILITY TYPE SEQ. No. SHT. No.

REV	DATE	DESCRIPTION	BY	CHK	APP	SCALE:		
01	10/05/2010	Addition of RTJ flange dims				DRAWN	DM	DATE: 14/12/10
						CHECKED	SMN	DATE
						APPROVED	AW	DATE

DESIGN CODE	API 602/ANSI B16.34	TEST PRESSURES		
FACE TO FACE DIMENSIONS	ANSI B 16.10	BODY	153.15	Barg
ENDS FLANGES DIMENSIONS	ASME B16.5	SEAT	112.31	Barg
TESTING CODE	API 598	BACKSEAT	112.31	Barg
		AIR - SEAT	6.0	Barg

All drawings are subject to copyright, reproduction only with express permission of Edmund Valve Company (1965) Ltd. Subject to updating and revision. All Edmund valves drawings are product specific, it is the clients responsibility to ensure suitability for service. Materials, design and dimensions subject to contract.

MATERIALS TO MAKE MR0175 LATEST EDITION (WETTED PARTS)