

1 | 2 | 3 | 4 | 5 | 6 | 7 | 8

A

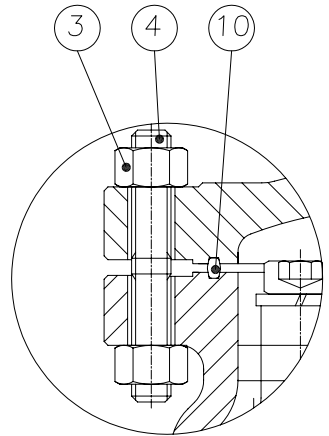
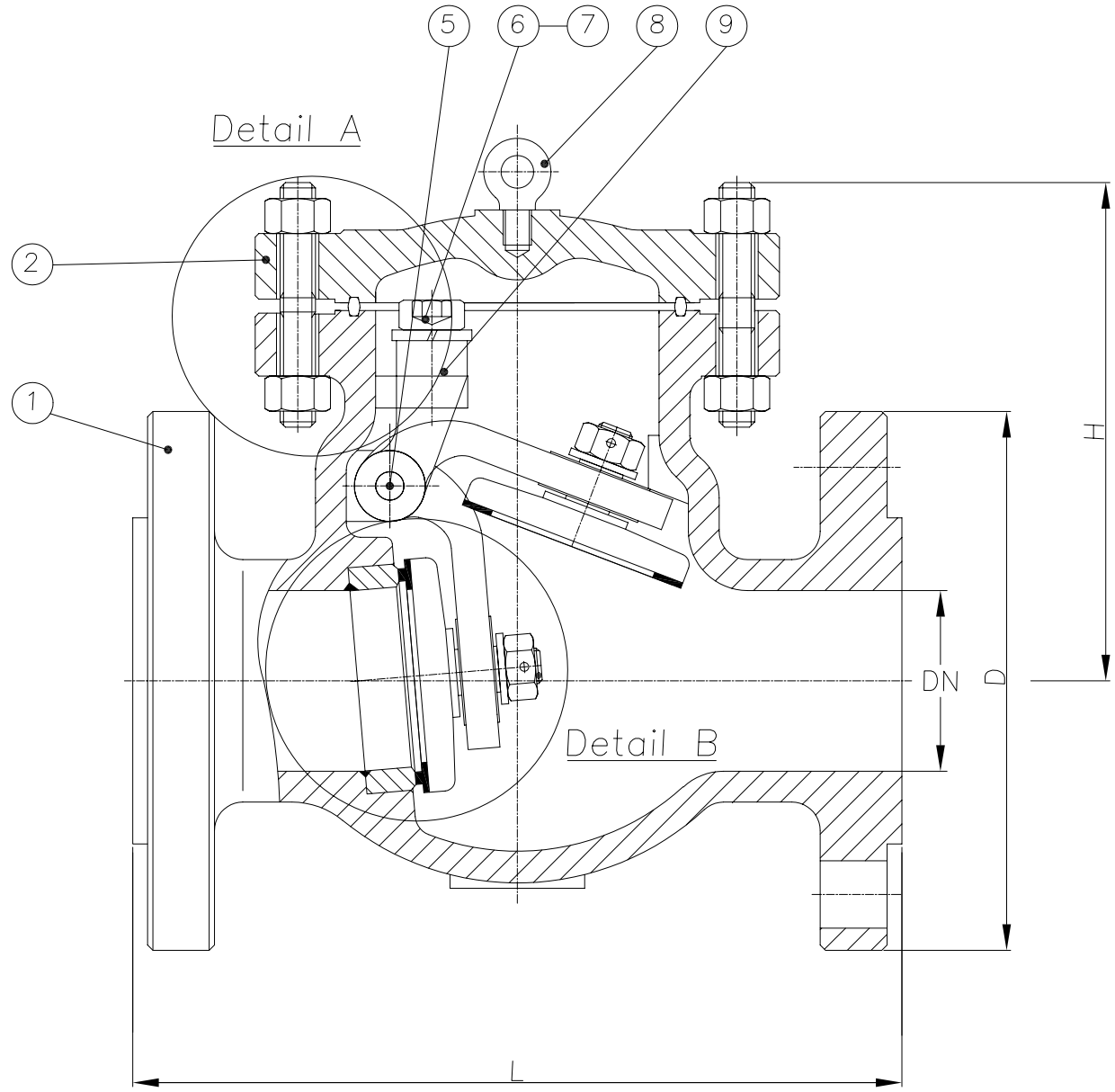
B

C

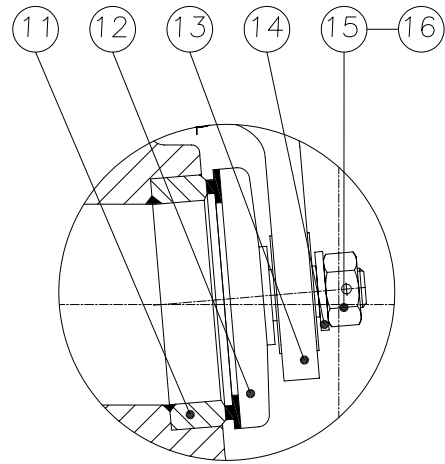
D

E

BILL OF MATERIALS				
NO.	DESIGNATION	QTY	MATERIAL	NOTES
1	BODY	1	ASTM A216 WCB	
2	COVER	1	ASTM A216 WCB	
3	COVER NUT	1	ASTM A194 2HM	
4	COVER BOLT	1	ASTM A193 B7M	
5	HINGE PIN	1	CARBON STEEL	
6	EYE BOLT	1	ASTM A193 B7M	
7	SPRING WASHER	1	SPRING STEEL	
8	STATIONARY RING	1	CARBON STEEL	
9	BEARING BRACKET	1	ASTM A216 WCB	
10	GASKET	1	316+GRAPHITE	
11	SEAT	1	ASTM A105+STL	
12	DISC	1	ASTM A216 WCB	
13	HINGE	1	ASTM A216 WCB	
14	DISC WASHER	1	CARBON STEEL	
15	DISC NUT PIN	1	CARBON STEEL	
16	VALVE NUT	1	ASTM A194 2HM	



Detail A



Detail B

ITEM NO.	N.B	DN	L	D	H
	2"	51	203	152	146
	3"	76	241	191	197
	4"	102	292	229	222
	6"	152	356	279	273
	8"	203	495	343	324
	10"	254	622	406	394
	12"	305	699	483	432
	14"	337	787	533	499
	16"	387	864	597	559
	18"	435	978	635	635
	20"	483	978	699	673
	24"	591	1295	813	794

SWING CHECK VALVE CLASS 150

DRAWING TITLE:  
CAST STEEL CLASS 150  
BOLTED COVER, RF, SWING CHECK VALVES

PROJECT:

PACKAGE:

VENDOR DOC.NO.:



ENGINEERING DATA

DESIGN CODE	BS 1868/ANSI B16.34	TEST PRESSURES		
FACE TO FACE DIMENSIONS	ASME B16.10	BODY	30.0	Barg
ENDS CONNECTION DIMENSIONS	ASME B16.25	SEAT	22.0	Barg
TESTING CODE	API 598	BACKSEAT	22.0	Barg
		AIR - SEAT	6.0	Barg

				BY	CHK	APP	SCALE:	
							DRAWN	DATE
							CHECKED	DATE
							APPROVED	DATE

CAD. No.	DRAWING NUMBER:	120059	REV
	AREA No.	FACILITY	TYPE
	SEQ. No.	SHT. No.	

1 | 2 | 3 | 4 | 5 | 6 | 7 | 8

All drawings are subject to copyright, reproduction only with express permission of Edmund Valve Company (1965) Ltd. Subject to updating and revision.

MATERIALS TO NACE MR0175 LATEST EDITION (WETTED PARTS).

1 | 2 | 3 | 4 | 5 | 6 | 7 | 8

A

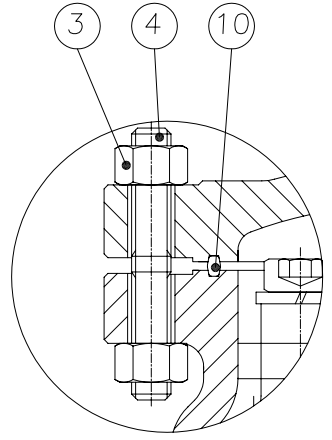
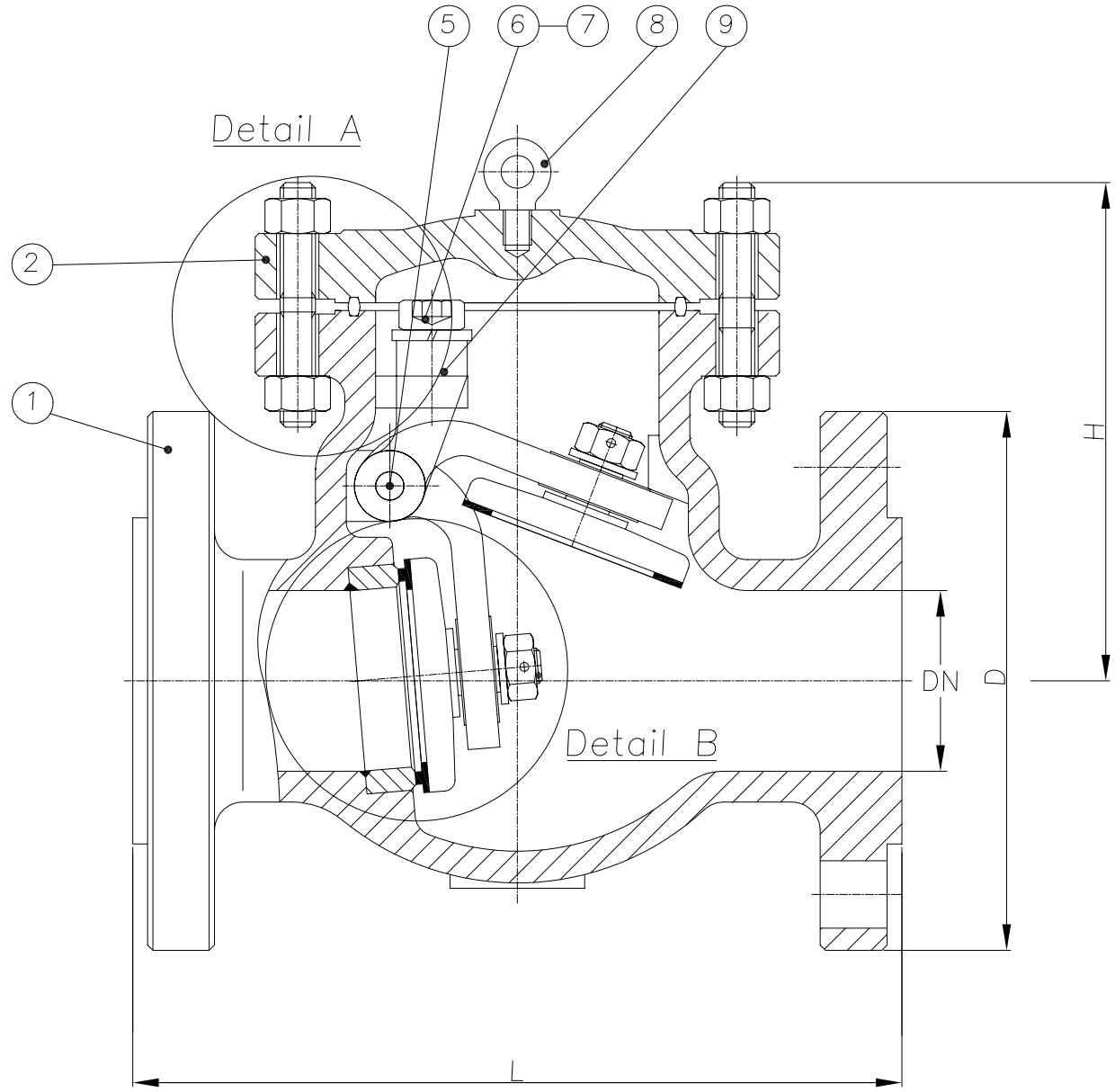
B

C

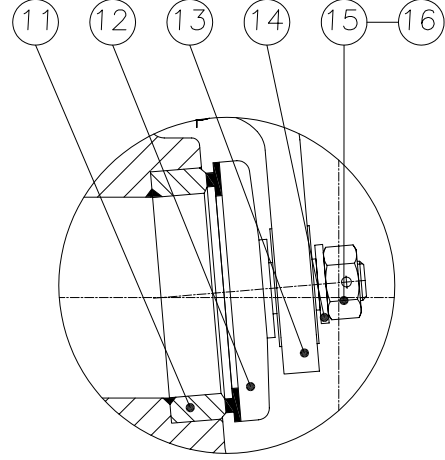
D

E

BILL OF MATERIALS				
NO.	DESIGNATION	QTY	MATERIAL	NOTES
1	BODY	1	ASTM A216 WCB	
2	COVER	1	ASTM A216 WCB	
3	COVER NUT	1	ASTM A194 2HM	
4	COVER BOLT	1	ASTM A193 B7M	
5	HINGE PIN	1	CARBON STEEL	
6	EYE BOLT	1	ASTM A193 B7M	
7	SPRING WASHER	1	SPRING STEEL	
8	STATIONARY RING	1	CARBON STEEL	
9	BEARING BRACKET	1	ASTM A216 WCB	
10	GASKET	1	316+GRAPHITE	
11	SEAT	1	ASTM A105+STL	
12	DISC	1	ASTM A216 WCB	
13	HINGE	1	ASTM A216 WCB	
14	DISC WASHER	1	CARBON STEEL	
15	DISC NUT PIN	1	CARBON STEEL	
16	VALVE NUT	1	ASTM A194 2HM	



Detail A



Detail B

ITEM NO.	N.B	DN	L	D	H
	2"	51	267	165	152
	3"	76	318	210	197
	4"	102	356	254	222
	6"	152	445	318	273
	8"	203	533	381	324
	10"	254	622	445	413
	12"	305	711	521	432
	14"	337	838	584	499
	16"	387	864	648	572
	18"	435	978	711	635
	20"	483	1016	775	673
	24"	591	1346	914	794

ENGINEERING DATA

DESIGN CODE	BS 1868/ANSI B16.34	TEST PRESSURES		
FACE TO FACE DIMENSIONS	ASME B16.10	BODY	76.65	Barg
ENDS CONNECTION DIMENSIONS	ASME B16.25	SEAT	56.21	Barg
TESTING CODE	API 598	BACKSEAT	56.21	Barg
		AIR - SEAT	6.0	Barg

				BY	CHK	APP	SCALE:	
							DRAWN	DATE
							CHECKED	DATE
							APPROVED	DATE

DRAWING TITLE:  
CAST STEEL CLASS 300  
BOLTED COVER, RF, SWING CHECK VALVES

PROJECT:

PACKAGE:

VENDOR DOC.NO.:



CAD. No.	DRAWING NUMBER:	120063	REV
	AREA No.	FACILITY	TYPE
	SEQ. No.	SHT. No.	

1 | 2 | 3 | 4 | 5 | 6 | 7 | 8

All drawings are subject to copyright, reproduction only with express permission of Edmund Valve Company (1965) Ltd. Subject to updating and revision. MATERIALS TO NACE MR0175 LATEST EDITION (WETTED PARTS).

1 | 2 | 3 | 4 | 5 | 6 | 7 | 8

A

B

C

D

E

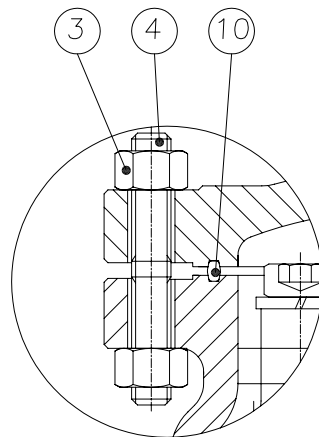
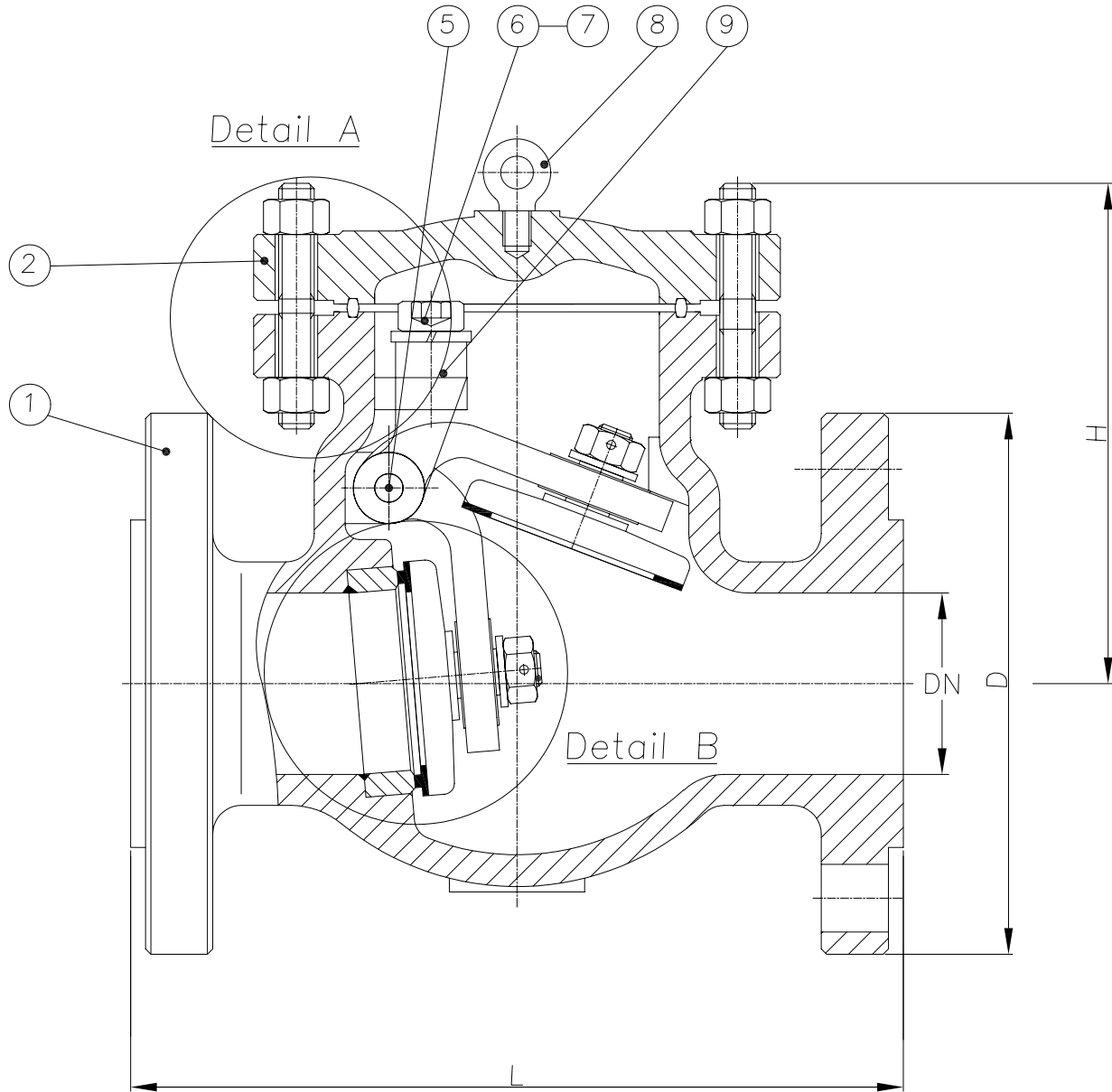
A

B

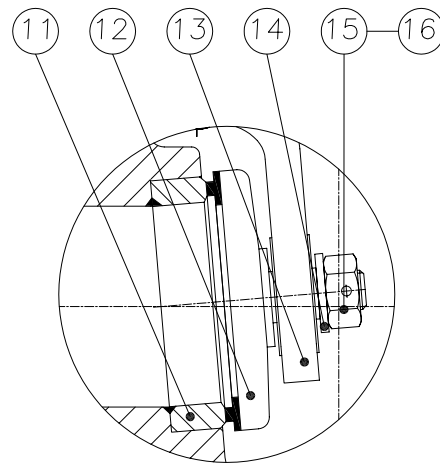
C

D

E



Detail A



Detail B

BILL OF MATERIALS

NO.	DESIGNATION	QTY	MATERIAL	NOTES
1	BODY	1	ASTM A216 WCB	
2	COVER	1	ASTM A216 WCB	
3	COVER NUT	1	ASTM A194 2HM	
4	COVER BOLT	1	ASTM A193 B7M	
5	HINGE PIN	1	CARBON STEEL	
6	EYE BOLT	1	ASTM A193 B7M	
7	SPRING WASHER	1	SPRING STEEL	
8	STATIONARY RING	1	CARBON STEEL	
9	BEARING BRACKET	1	ASTM A216 WCB	
10	GASKET	1	316+GRAPHITE	
11	SEAT	1	ASTM A105+STL	
12	DISC	1	ASTM A216 WCB	
13	HINGE	1	ASTM A216 WCB	
14	DISC WASHER	1	CARBON STEEL	
15	DISC NUT PIN	1	CARBON STEEL	
16	VALVE NUT	1	ASTM A194 2HM	

ITEM NO.	N.B	DN	L	D	H
	2"	51	292	165	159
	3"	76	356	210	222
	4"	102	432	273	235
	6"	152	559	356	292
	8"	200	660	419	343
	10"	248	787	508	425
	12"	298	838	559	470
	14"	327	889	603	532
	16"	375	991	686	594
	18"	419	1092	743	728
	20"	464	1194	813	689
	24"	559	1397	940	907

ENGINEERING DATA

DESIGN CODE	BS 1868/ANSI B16.34	TEST PRESSURES		
FACE TO FACE DIMENSIONS	ASME B16.10	BODY	153.15	Barg
ENDS CONNECTION DIMENSIONS	ASME B16.25	SEAT	112.31	Barg
TESTING CODE	API 598	BACKSEAT	112.31	Barg
		AIR - SEAT	6.0	Barg

				BY	CHK	APP	SCALE:	
							DRAWN	DATE
							CHECKED	DATE
							APPROVED	DATE

DRAWING TITLE:  
CAST STEEL CLASS 600  
BOLTED COVER, RF, SWING CHECK VALVES

PROJECT:  
PACKAGE:  
VENDOR DOC.NO.:

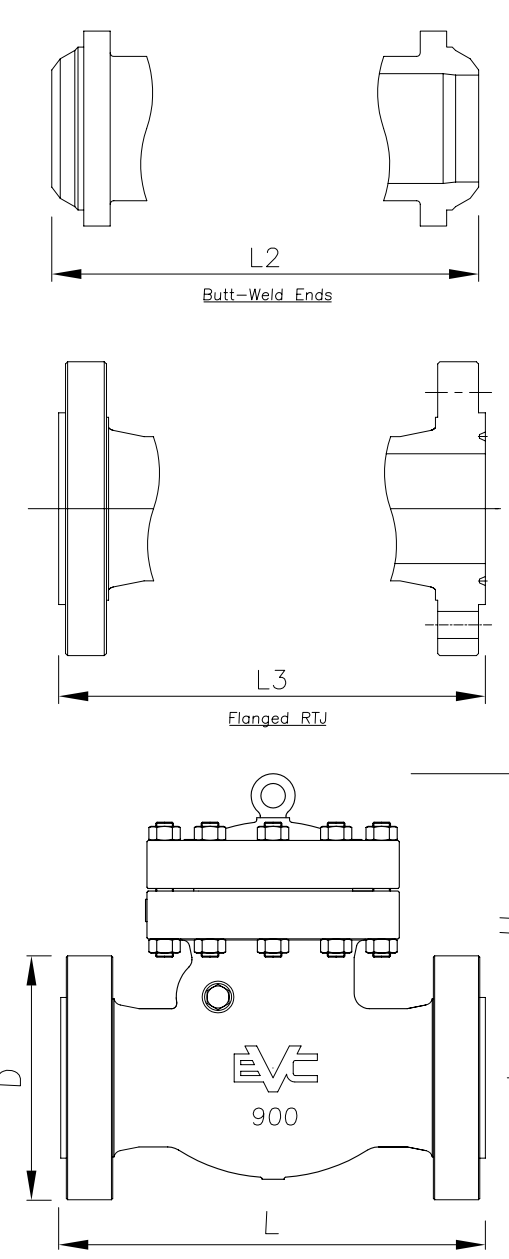
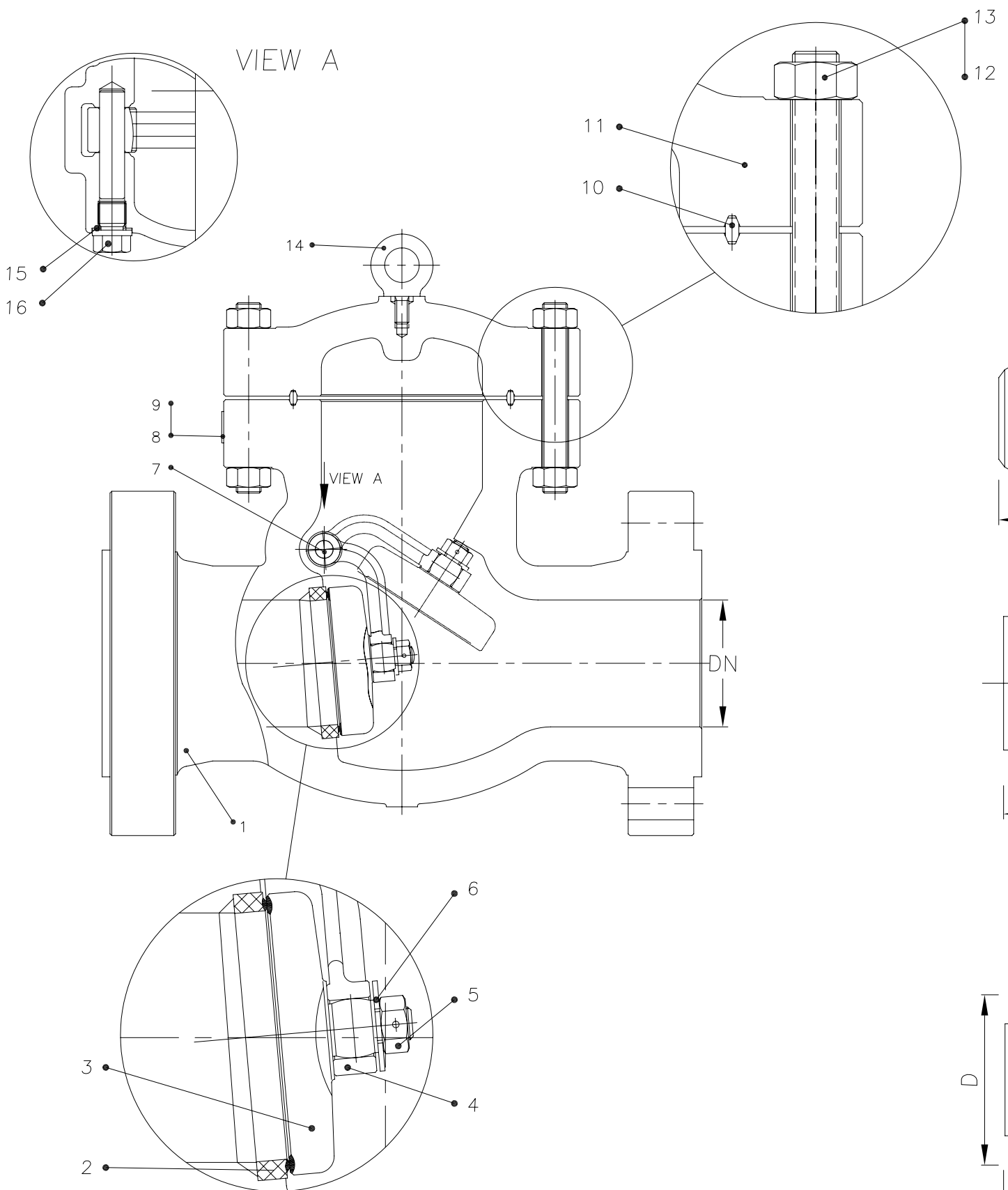


CAD. No.	DRAWING NUMBER:	120066	REV
	AREA No.	FACILITY	TYPE
	SEQ. No.	SHT. No.	

1 | 2 | 3 | 4 | 5 | 6 | 7 | 8

All drawings are subject to copyright, reproduction only with express permission of Edmund Valve Company (1965) Ltd. Subject to updating and revision. MATERIALS TO NACE MR0175 LATEST EDITION (WETTED PARTS).

All drawings are subject to copyright, reproduction only with express permission of Edmund Valve Company (1965) Ltd. Subject to updating and revisions all Edmund valve drawings are product specific. It is the clients responsibility to ensure suitability for service. Materials, design and dimensions subject to contract. MATERIALS TO NACE MR0175 LATEST EDITION (WETTED PARTS).



BILL OF MATERIALS

16	Plug	1	A276 410
15	Washer	1	A276 304
14	Eyebolt	1	A29 1035
13	Nut		A194 2H
12	Bolt		A193 B7
11	Bonnet	1	A216 WCB
10	Gasket	1	AISI 304
9	Name Plate	1	304ss
8	Rivet	1	304ss
7	Pin	1	Carbon Steel
6	Washer	1	A276 304
5	Disc Nut	1	A276 410
4	Hinge	1	A216 WCB
3	Disc	1	A216 WCB+Stellite
2	Seat Ring	2	A105+Stellite
1	Body	1	A216 WCB

NO.	Part Name	Qty.	Material
-----	-----------	------	----------

Materials available on request: Stainless steel all grades; Duplex & Super Duplex; Chrome-moly; Inconel; Monel;

N.B	DN	L	L2	L3	D	H	Wgt*
2"	43	368	368	371	216	333	63
3"	66	381	381	384	241	389	99
4"	92	457	457	460	292	419	193
6"	139	610	610	613	381	587	342
8"	182	737	737	740	470	680	562
10"	230	838	838	841	546	756	1035
12"	273	965	965	968	610	1008	1305
14"	300	1029	1029	1038	641	1035	1575
16"	344	1130	1130	1140	705	1067	2178

BW schedule as per client order  
\* Wgt for RF valves only

DRAWING TITLE:  
API CAST STEEL CLASS 900  
BOLTED COVER, RF,RTJ,BWE, SWING CHECK VALVE

PROJECT:  
PACKAGE:  
VENDOR DOC.NO.:

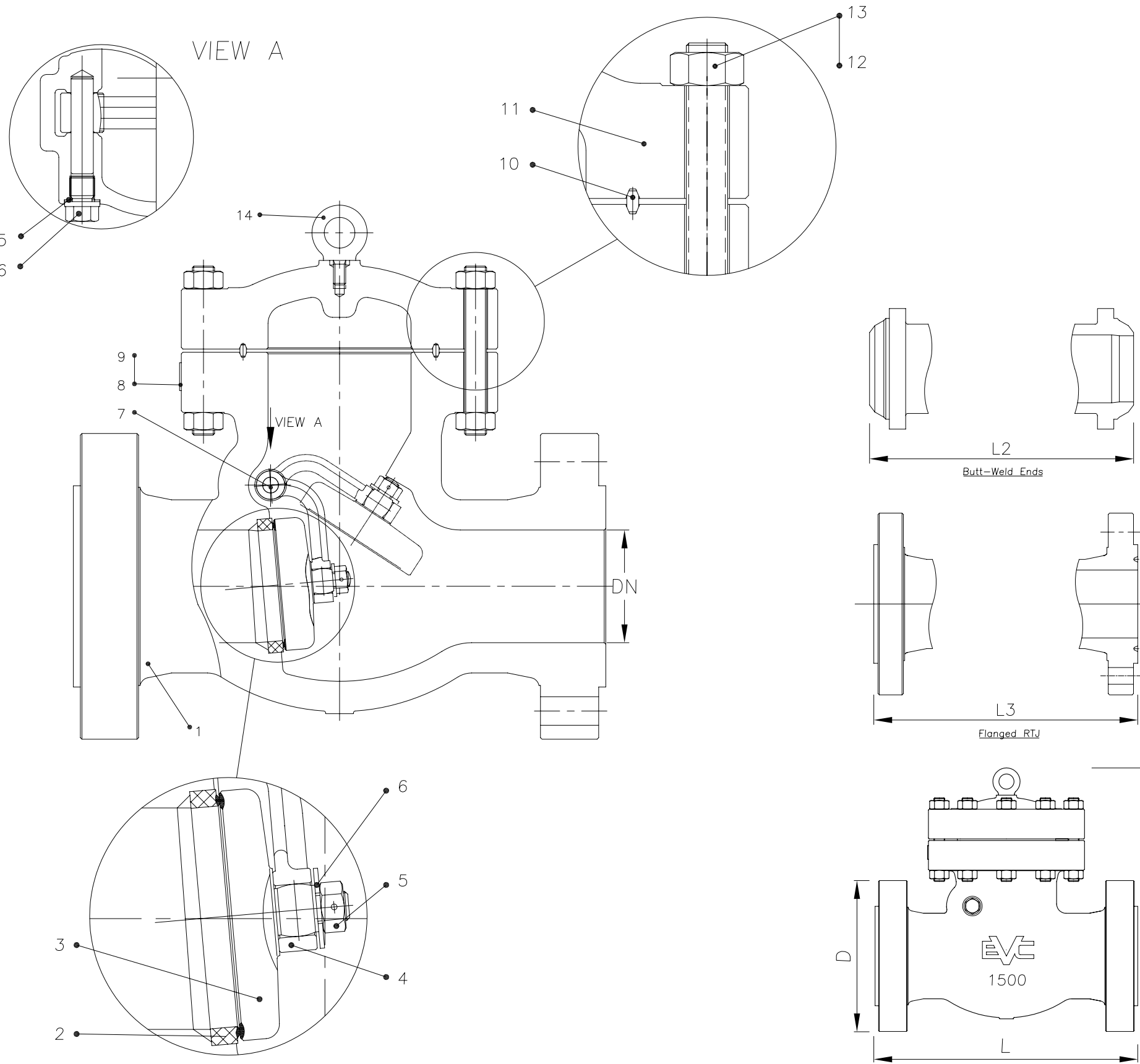


ENGINEERING DATA

DESIGN CODE	BS 1868/ANSI B16.34	TEST PRESSURES		
FACE TO FACE DIMENSIONS	ASME B16.10	BODY	225.0	Barg
END CONNECTION DIMENSIONS	ASME B16.5 / 16.25	SEAT	165.0	Barg
TESTING CODE	API 598	BACKSEAT	165.0	Barg
		AIR - SEAT	6.0	Barg

				BY	CHK	APP	SCALE:	
							DRAWN	DATE
							CHECKED	DATE
							APPROVED	DATE

CAD. No.	DRAWING NUMBER:	120067	REV	00
AREA No.	FACILITY	TYPE	SEQ. No.	SHT. No.



BILL OF MATERIALS			
16	Plug	1	A276 410
15	Washer	1	A276 304
14	Eyebolt	1	A29 1035
13	Nut		A194 2H
12	Bolt		A193 B7
11	Bonnet	1	A216 WCB
10	Gasket	1	AISI 304
9	Name Plate	1	304ss
8	Rivet	1	304ss
7	Pin	1	Carbon Steel
6	Washer	1	A276 304
5	Disc Nut	1	A276 410
4	Hinge	1	A216 WCB
3	Disc	1	A216 WCB+Stellite
2	Seat Ring	2	A105+Stellite
1	Body	1	A216 WCB
NO.	Part Name	Qty.	Material

Materials available on request: Stainless steel all grades; Duplex & Super Duplex; Chrome-moly; Inconel; Monel;

N.B	DN	L	L2	L3	D	H	Wgt*
2"	43	368	368	371	216	333	63
3"	66	470	470	473	266	389	153
4"	92	546	546	549	311	419	270
6"	139	705	705	711	393	587	626
8"	182	832	832	841	482	680	1071
10"	230	991	991	1000	584	756	1665
12"	273	1131	1131	1146	673	1008	2997
14"	300	1257	1257	1276	749	1035	3240
16"	344	1383	1383	1407	825	1067	4410

BW schedule as per client order  
\* Wgt for RF valves only

ENGINEERING DATA

DESIGN CODE	BS 1868/ANSI B16.34	TEST PRESSURES		
FACE TO FACE DIMENSIONS	ASME B16.10	BODY	382.95	Barg
END CONNECTION DIMENSIONS	ASME B16.5 / 16.25	SEAT	280.83	Barg
TESTING CODE	API 598	BACKSEAT	280.83	Barg
		AIR - SEAT	6.0	Barg

BY	CHK	APP	SCALE:
			DRAWN DATE
			CHECKED DATE
			APPROVED DATE

DRAWING TITLE:  
API CAST STEEL CLASS 1500  
BOLTED COVER, RF,RTJ,BWE, SWING CHECK VALVE

PROJECT:  
PACKAGE:  
VENDOR DOC.NO.:

CAD. No. DRAWING NUMBER: 120066 REV 00  
TYPICAL ONLY  
AREA No. FACILITY TYPE SEQ. No. ISHT. No.

All drawings are subject to copyright, reproduction only with express permission of Edmund Valve Company (1965) Ltd. Subject to updating and revision. All Edmund valves drawings are product specific. It is the clients responsibility to ensure suitability for service. Materials, design and dimensions subject to contract.

MATERIALS TO NACE MR0175 LATEST EDITION (WETTED PARTS).