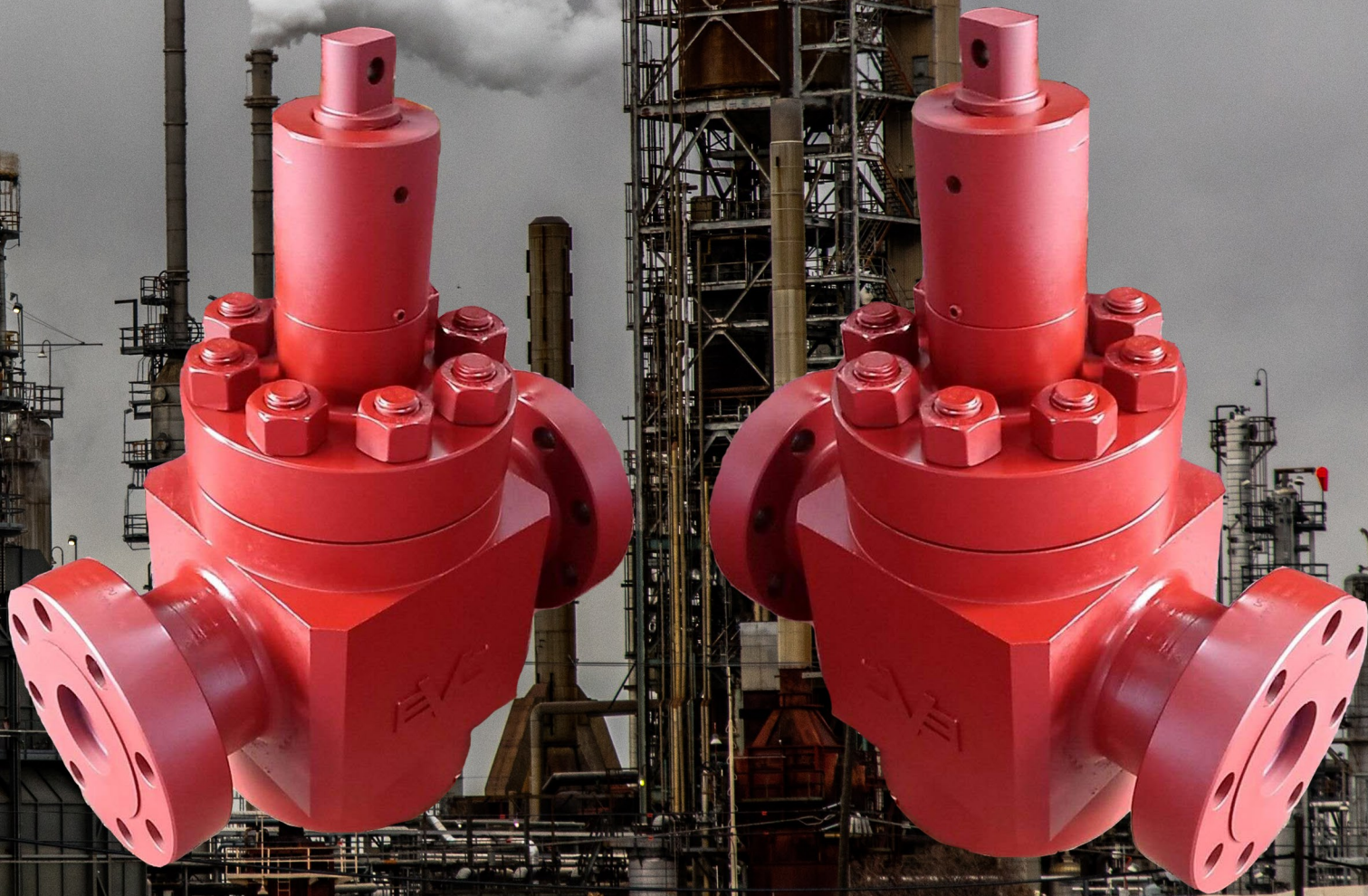




Edmund

VALVE COMPANY (1965) LTD

WELLHEAD VALVES



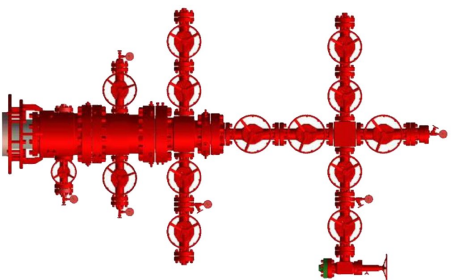
Edmund

WELLHEAD EQUIPMENT- Christmas Tree

Our company provides various specifications of the wellhead equipment and accessories, suitable for kinds of oil production, gas wells.

Wellhead equipment is a common customized wellhead equipment. The casing head, tubing head, hanger and parts for valve are designed and manufactured in accordance with API 6A standards.

Pressure from 2000psi - 15000psi, material category from AA~FF.



■ Specifications:

flange size	working pressure	Casing size	A	B	C	D	Approximate Weight
11"	2000psi	9-5/8"	17"	10-1/8"	10-7/8"	9"	505
11"	3000psi	8-5/8"	17"	10-1/8"	10-7/8"	8"	535
11"	3000psi	9-5/8"	17"	10-1/8"	10-7/8"	9"	525
11"	3000psi	10-3/4"	17"	10-1/8"	10-7/8"	10"	490
11"	5000psi	8-5/8"	17"	10-1/2"	10-7/8"	8"	685
11"	5000psi	9-5/8"	17"	10-1/2"	10-7/8"	9"	680
11"	5000psi	10-3/4"	17"	10-1/2"	10-7/8"	10"	670
13-5/8"	3000psi	13-3/8"	17"	10-1/4"	13-1/2"	12-3/8"	570
13-5/8"	5000psi	13-3/8"	19"	10-1/4"	13-1/2"	19"	1000
21-1/4"	2000psi	20"	20"	10-1/4"	21-1/8"	19"	1050
20-3/4"	3000psi	20"	23"	15"	21-1/8"	19"	1322

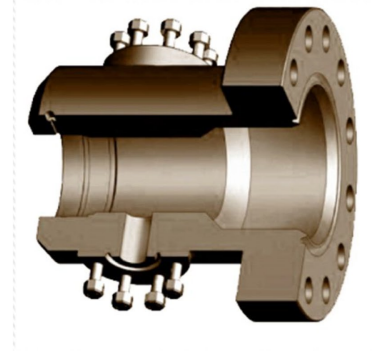
Goat Head/Frac Head



Casing Head

■ Specifications:

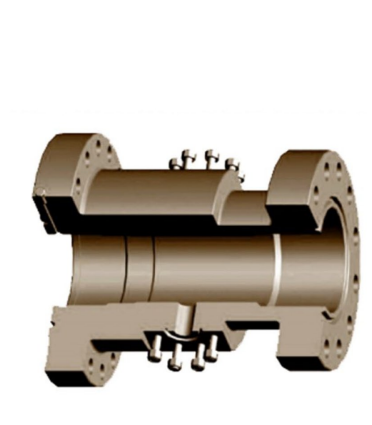
flange size	working pressure	Casing size	A	B	C	D	Approximate Weight
11 "	2000psi	9-5/8 "	17 "	10-1/8 "	10-7/8 "	9 "	505
11 "	3000psi	8-5/8 "	17 "	10-1/8 "	10-7/8 "	8 "	535
11 "	3000psi	9-5/8 "	17 "	10-1/8 "	10-7/8 "	9 "	525
11 "	3000psi	10-3/4 "	17 "	10-1/8 "	10-7/8 "	10 "	490
11 "	5000psi	8-5/8 "	17 "	10-1/2 "	10-7/8 "	8 "	685
11 "	5000psi	9-5/8 "	17 "	10-1/2 "	10-7/8 "	9 "	680
11 "	5000psi	10-3/4 "	17 "	10-1/2 "	10-7/8 "	10 "	670
13-5/8 "	3000psi	13-3/8 "	17 "	10-1/4 "	13-1/2 "	12-3/8 "	570
13-5/8 "	5000psi	13-3/8 "	19 "	10-1/4 "	13-1/2 "	19 "	1000
21-1/4 "	2000psi	20 "	20 "	10-1/4 "	21-1/8 "	19 "	1050
20-3/4 "	3000psi	20 "	23 "	15 "	21-1/8 "	19 "	1322



Casing Head Spool

■ Specifications:

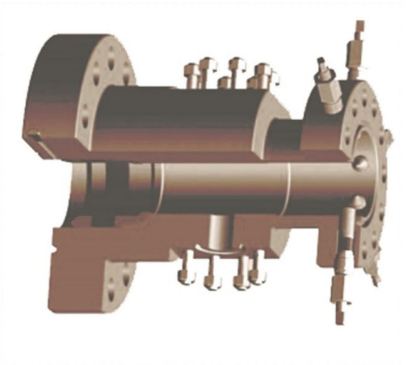
Bottom flange	working pressure	top flange	working pressure	side outlet	A	B	C	D	Approximate weight
11 "	3000psi	11 "	3000psi	2-1/16 " s tdd	20-5/8 "	10-1/4 "	10-7/8 "	10 "	755
11 "	3000psi	11 "	5000psi	2-1/16 " s tdd	22-1/4 "	12-3/4 "	10-7/8 "	10 "	835
11 "	5000psi	11 "	5000psi	2-1/16 " s tdd	23-7/8 "	12-3/4 "	10-7/8 "	10 "	910
11 "	5000psi	11 "	10000psi	1-13/16 " s tdd	24-3/4 "	13-5/8 "	10-7/8 "	10 "	1210
11 "	10000psi	11 "	10000psi	1-13/16 " s tdd	25-5/8 "	14-1/2 "	10-7/8 "	10 "	1410
13-5/8 "	3000psi	11 "	3000psi	2 " LP	22-5/8 "	10-1/4 "	10-7/8 "	10 "	680
13-5/8 "	3000psi	11 "	3000psi	2-1/16 " s tdd	22-5/8 "	10-1/4 "	10-7/8 "	10 "	799
13-5/8 "	3000psi	11 "	5000psi	2 " LP	25-1/4 "	12-3/4 "	10-7/8 "	12-3/8 "	1140
13-5/8 "	3000psi	11 "	5000psi	2-1/16 " s tdd	25-1/4 "	12-3/4 "	10-7/8 "	19 "	1168
13-5/8 "	5000psi	11 "	5000psi	2-1/16 " s tdd	25-1/8 "	12-3/4 "	10-7/8 "	19 "	1430
13-5/8 "	5000psi	11 "	10000psi	1-13/16 " s tdd	26 "	13-1/2 "	10-7/8 "	19 "	1631
21-1/4 "	2000psi	13-5/8 "	3000psi	2-1/16 " s tdd	26-3/4 "	10-5/8 "	13-1/2 "	12-1/2 "	1755
20-3/4 "	3000psi	13-5/8 "	3000psi	1-13/16 " s tdd	27-5/8 "	10-5/8 "	13-1/2 "	12-1/2 "	1855
20-3/4 "	3000psi	13-5/8 "	5000psi	2-1/16 " s tdd	28-5/8 "	12-1/8 "	13-1/2 "	12-1/2 "	1950



Tubing Spool

■ Specifications:

Bottom flange	working pressure	top flange	working pressure	side outlet	A	B	C	D	Approximate weight
11"	2000psi	7-1/16"	2000psi	2" LP	16-3/4"	9-7/16"	7"	6-3/8"	440
11"	3000psi	7-1/16"	3000psi	2-1/16" s tdd	17"	9-3/4"	7"	6-3/8"	605
11"	3000psi	7-1/16"	3000psi	2-9/16" s tdd	17"	9-3/4"	7"	6-3/8"	635
11"	3000psi	7-1/16"	5000psi	2-1/16" s tdd	17"	10-7/8"	7"	6-13/16"	675
11"	3000psi	7-1/16"	5000psi	2-9/16" s tdd	17"	10-7/8"	7"	6-13/16"	725
11"	5000psi	7-1/16"	5000psi	2-1/16" s tdd	19"	10-7/8"	7"	6-13/16"	880
11"	5000psi	7-1/16"	10000psi	1-13/16" s tdd	19"	10-7/8"	7"	6-13/16"	1170
11"	10000psi	7-1/16"	10000psi	1-13/16" s tdd	24-1/4"	11"	7"	6-13/16"	1425
11"	10000psi	7-1/16"	15000psi	1-13/16" s tdd	26-1/2"	12-1/8"	7"	6-13/16"	1710



Choke Manifold/Kill Manifold

- **Main technical specifications:**
 - working pressure: 2000Psi ~ 15000Psi
 - Working medium: oil, gas, water...
 - Size: 1-13/16" ~ 4-1/16"
 - Temperature class: L~U
 - Material class: AA BB CC DD EE FF HH
 - Specification class: PSL1, PSL2, PSL3
 - Performance class: PR1,
 - Manufacturing standard: API 6A, API 16C,



SSV – Surface Safety Valve

Surface Safety Valve

We can provide pneumatic or hydraulic SSV, which can meet various working conditions.

